

**Kasparov Karpov 5**  
Chess World Championship  
NewYork-Lion 1990

Paolo Ciancarini

February 1991

## Contents

1	Game 1: New York, Oct 8, 1990	5
2	Game 2: New York, Oct 10, 1990	6
3	Game 3: New York, Oct 15, 1990	8
4	Game 4: New York, Oct 17, 1990	10
5	Game 5: New York, Oct 22, 1990	11
6	Game 6: New York, Oct 24, 1990	12
7	Game 7: New York, Oct 28, 1990	13
8	Game 8: New York, Oct 29, 1990	14
9	Game 9: New York, Oct 31, 1990	17
10	Game 10: New York, Nov 2, 1990	18
11	Game 11: New York, Nov 5, 1990	19
12	Game 12: New York, Nov 7, 1990	20
13	Game 13: Lion, Nov 24, 1990	22
14	Game 14: Lion, Nov 26, 1990	23
15	Game 15: Lion, Nov 28, 1990.	25
16	Game 16: Lion, Dec 4, 1990	28
17	Game 17: Lion, Dec 2, 1990	32
18	Game 18: Lion, Dec 4, 1990	33

<b>19 Game 19:</b> Lion, Dec 12, 1990	<b>35</b>
<b>20 Game 20:</b> Lion, Dec 15, 1990	<b>37</b>
<b>21 Game 21:</b> Lion, Dec 19, 1990	<b>39</b>
<b>22 Game 22:</b> Lion, Dec 26, 1990	<b>43</b>
<b>23 Game 23:</b> Lion, Dec 29, 1990	<b>45</b>
<b>24 Game 24:</b> Lion, Dec 31, 1990	<b>46</b>

The Kasparov-Kasparov fifth World Championship match in NewYork-Lion was one of the most interesting matches between these two players. Almost all the games were exciting, and the fight was fierce.

The time control was 40 moves in 2 hours and half, then 16 moves per hour. The referee was G.Gijssen (NL), who also directed the match in Siviglia. Kasparov's training team included Z.Dolmatov, M.Gurevich, Z.Azmaiparashvili, G.Georgadze, and A.Shakarov. Karpov's training team included N.Krogius, L.Portish, and R.Henley. In France O.Renet was added to the Karpov's team.

Press room commenters were notable grandmasters that found very difficult to assess in real time the moves of the two champions.

# 1 Game 1: New York, Oct 8, 1990

KARPOV-KASPAROV

KING'S INDIAN DEFENSE (E81/14)

- |    |        |        |
|----|--------|--------|
| 1. | d2-d4  | ♞g8-f6 |
| 2. | c2-c4  | g7-g6  |
| 3. | ♞b1-c3 | ♙f8-g7 |
| 4. | e2-e4  | d7-d6  |
| 5. | f2-f3  |        |

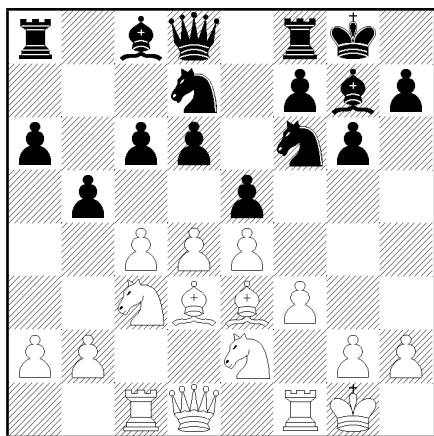
5 ♞f3 - games 3,5,7. Some months ago Kasparov has lost a game as Black in this variant against Gulko.

- |    |        |       |
|----|--------|-------|
| 5. | ...    | 0-0   |
| 6. | ♙c1-e3 | c7-c6 |

The Byrne variation. Kasparov previously played 6. ..., ♞c6. The idea is to open a file on Queen side, to avoid White long castle.

- |     |        |        |
|-----|--------|--------|
| 7.  | ♙f1-d3 | a7-a6  |
| 8.  | ♞g1-e2 | b7-b5  |
| 9.  | 0-0    | ♞b8-d7 |
| 10. | ♚a1-c1 | e7-e5  |

Kasparov spent 6 minutes on this move. ECO has 10. ..., ♙b7; 11. ♚d2, bxc4; 12. ♙xc4, ♞b6; 13. ♙b3, a5; 14. ♞a4, ♞fd7; 15. ♚c2 = from Hort-Benko, Monte Carlo 1968.



- |     |       |
|-----|-------|
| 11. | a2-a3 |
|-----|-------|

Kasparov spent 20 minutes on this new move. Previously played was 11. b3 exd4; 12. ♞xd4 ♞e5; 13. cxb5 axb5; 14. ♙e2 d5, Diez del Corral - Spassky, Palma de Mallorca 1969. Seirawan suggested 11. b4. ECO also has 11. d5.

- |          |        |             |     |
|----------|--------|-------------|-----|
| 11.      | ...    | e5xd4       |     |
| 11. ..., | bxc4   | or 11. ..., | ♙b7 |
| 12.      | ♞e2xd4 | ♙c8-b7      |     |

Christiansen and Seirawan liked White's position. Shamkovich, Najdorf, and Zuckerman

liked Black's position. Dlugy thought it was even.

- |     |       |       |
|-----|-------|-------|
| 13. | c4xb5 | c6xb5 |
|-----|-------|-------|

Most people (except Shamkovich) expected 13. ..., axb5. Robert Byrne preferred 13. ..., axb5 but thought about playing 13. ..., cxb5 in his earlier career. He did not think that 13. ..., cxb5 was earth-shattering, though.

- |     |        |
|-----|--------|
| 14. | ♚f1-e1 |
|-----|--------|

Kasparov spent 30 minutes on this move. Najdorf thought it was weak.

- |     |        |        |
|-----|--------|--------|
| 14. | ...    | ♞d7-e5 |
| 15. | ♙d3-f1 | ♚f8-e8 |

An alternative is 15. ..., ♚c8.

- |     |        |        |
|-----|--------|--------|
| 16. | ♙e3-f2 | d6-d5  |
| 17. | e4xd5  | ♞f6xd5 |
| 18. | ♞c3xd5 |        |

18 ♞e4 was analyzed by many GMs. Seirawan looked at 18. ♞e4 ♞f4; 19. ♞c5 ♚g5; 20. ♙g3 ♙d5; 21. ♙e3 ♞h3+; 22. ♚h1 ♚xe3; 23. ♚xe3 ♞f2+.

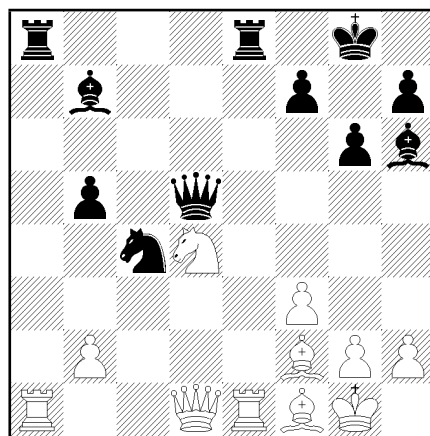
- |     |        |        |
|-----|--------|--------|
| 18. | ...    | ♚d8xd5 |
| 19. | a3-a4  | ♙g7-h6 |
| 20. | ♚c1-a1 |        |

Or 20. ♚c7 ♙f4.

- |     |     |        |
|-----|-----|--------|
| 20. | ... | ♞e5-c4 |
|-----|-----|--------|

Or 20. ..., b4; 21. ♚b3 ♚a5.

- |     |       |       |
|-----|-------|-------|
| 21. | a4xb5 | a6xb5 |
|-----|-------|-------|



- |     |                    |
|-----|--------------------|
| 22. | ♚a1xa8             |
| 22. | ♚xe8+ ♚xe8; 23. b3 |
- was what Seirawan expected. Deep Thought analyzed 22. b3! and now:

A) 22. ..., ♞d6; 23. ♚xe8 + (or perhaps 23. ♞xb5) 23. ..., ♚xe8 (23. ..., ♞xe8; 24. ♚xa8 ♙xa8; 25. ♙xb5) 24. ♞xb5 ♞xb5; 25. ♚xd5 ♙xd5; 26. ♙xb5 ♚b8; 27. ♙a4.

B) 22. ..., ♚xe1; 23. ♚xa8+, ♙xa8; 24. ♚xe1, ♞d2; (24. ..., ♞d6; 25. ♞xb5, ♞xb5;

26. ♖e8+, ♔g7; 27. ♗×b5. 24. ..., ♘a3; 25, ♘×b5. ♘×b5; 26. ♖e8+, ♔g7; 27. ♗×b5) 25. ♙×b5, ♘×b3; 26. ♖e8+, ♔g7; 27. ♘×b3, ♗×b3; 28. ♙d4 (28. ♙c5, ♗d1+; 29. ♙f1. If 28. ..., ♙e3+; 29. ♙×e3, ♗c3) 29. ..., f6; 29. ♗e7+, ♔g8; ( 29. ..., ♗f7; 30. ♙×f6+, ♔g8) 30. ♗d8+, ♙f8; 31. ♙c5, ♗f7; 32. ♙c4, winning.

C) 22. ..., ♘e3; 23. ♖×a8, ♙×a8 (23. ..., ♘×d1; 24. ♖a×e8+, ♔g7; 25. ♖×d) 24. ♗d3, ♖d8; 25. ♙×e3, ♙×e3; 26. ♖×e3, ♗×d4; 27. ♖e8+ wins.

D) 22. ..., ♘d2; 23. ♖×e8+ (23. ♖×a8, ♖×a8; 24. ♙×b5, ♙f4) 23. ..., ♖×e8; 24. ♙×b5, ♖d8; 25. ♖a2 (25. ♖a7, ♖c8; 26. ♙e2, ♗d7; 27. ♙a6, ♖c7; 28. ♙×b7, ♖×b7; 29. ♖a8+, ♔g7; 30. ♗a1, f6; 31. ♗a3, ♔f7; 32. b4, ♖c7; 33. b5)

25. ..., ♘×b5;

(25. ..., ♘e4; 26. f×e4, ♗×b5+)

26. ♗×b3, ♗×b3; 27. ♘×b3, ♖d1+; 28. ♙f1, ♙d5; 29. ♖a3, ♙c4; 30. ♖a8+, ♔g7; 31. ♙d4+, f3; 32. ♖a7+, ♔g8; 33. ♖a1, ♙×b3; 34. ♖×d1, ♙×d1; 35. ♙×f6 with equality.

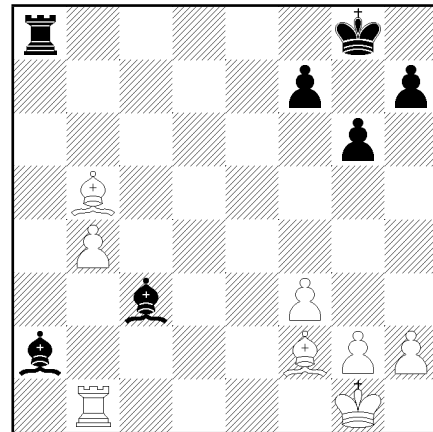
22. ... ♖e8×a8  
23. ♗d1-b3

Another drawish possibility is 23. ♘×b5, ♗×d1; 24. ♖×d1, ♘×b2; 25. ♖b1, ♙g7; 26. ♙d4, ♘a4.

23. ... ♙b7-c6  
24. ♙f1-d3 ♘c4-d6  
25. ♗b3×d5 ♙c6×d5  
26. ♘d4×b5 ♘d6×b5  
27. ♙d3×b5 ♙h6-g7  
28. b2-b4 ♙g7-c3  
29. ♖e1-d1 ♙d5-b3  
30. ♖d1-b1

Not 30. ♖d3?, ♖a1+. If 30. ♖c1, ♙×b4 (30. ..., ♙d2; 31. ♖b1, ♙c2; 32. ♖b2, ♖a1+; 33. ♙f1, ♙e3 draw) 31. ♖b1 (31. ♙a4, ♖×b4; 32. ♙×b5, ♖×b5; 33. ♖a1+ draw) 31. ..., ♙a4; 32. ♖×b4, ♙×b5; 33. ♖×b5, ♖a1+; 34. ♙e1 draw.

30. ... ♙b3-a2



Kasparov offered a draw and Karpov accepted. Karpov had 7 minutes to make 10 moves. Kasparov had 15 minutes left.

## 2 Game 2: New York, Oct 10, 1990

KASPAROV-KARPOV  
RUY LOPEZ (C92/29)

1.	e2-e4	e7-e5
2.	♘g1-f3	♙b8-c6
3.	♙f1-b5	a7-a6
4.	♙b5-a4	♘g8-f6
5.	0-0	♙f8-e7
6.	♖f1-e1	b7-b5
7.	♙a4-b3	d7-d6
8.	c2-c3	0-0
9.	h2-h3	♙c8-b7

Karpov used this defense to beat Timman in the Candidates' final in Kuala Lumpur.

10.	d2-d4	♖f8-e8
11.	♘b1-d2	♙e7-f8
12.	a2-a4	h7-h6

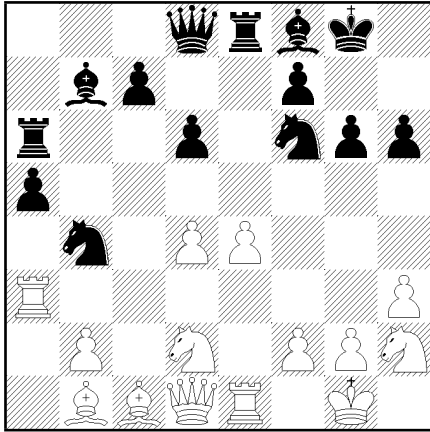
Against Timman, in the seventh game, Karpov preferred the caute 12. ..., ♗d7.

13.	♙b3-c2	e5×d4
13. ..., ♘b8		
14.	c3×d4	♘c6-b4
15.	♙c2-b1	b5×a4
15. ..., c5 - game 4.		

16.	♖a1×a4	a6-a5
17.	♖a4-a3	♖a8-a6
18.	♘f3-h2	

Ivanchuk has introduced 18. ♘h2. Timman played 18. ♘h4, ♘×e4! in game 1 of his match with Karpov, then tried 18. ♖ae3 in game 5.

18.	...	g7-g6
-----	-----	-------



19. f2-f3  
 Perhaps a new move. Kasparov spent 2 minutes on this move. Other moves have been 19. ♖g4, 19 e5, and 19. f4.

19. ... ♔d8-d7  
 Karpov spent 10 minutes on this move. Kasparov looked surprised.

20. ♖d2-c4  
 Threatening 21. ♗×a5. Also possible is 20. ♖df1.

20. ... ♔d7-b5  
 Some GMs looked at 20. ..., a4.

21. ♖a3-c3  
 Christiansen expected 21. ♗e3.

21. ... ♗b7-c8  
 Najdorf analyzed 21. ..., d5; 22 ♗a3 ♖b6; 23 e5 c5; 24 exf6 ♖×e1+ ;

25 ♖×e1 c×d4.  
 22. ♗c1-e3 ♔g8-h7

Karpov spent 10 minutes on this move. This surprised many of the Grandmaster annotators who expected 22. ..., h5 or 22. ..., ♖b7, then White would play 23 d5.

23. ♖d1-c1  
 Threatening 24. ♗a3, winning the c7 pawn. Christiansen liked 23. ♗f2.

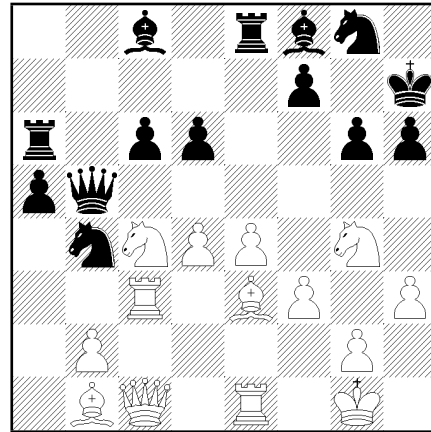
23. ... ♗c7-c6  
 23. ..., ♖b7; 24. ♗×a5 ♖×a5; 25. ♖×c7.

24. ♗h2-g4  
 GM Miguel Quinteros liked 24. ♗f2 and 25. ♖f4; Deep Thought preferred 24. ♗f4.

24. ... ♗f6-g8

Christiansen commented that Karpov was saving his pieces for the next game. Both 24. ..., ♗×g4 and 24. ..., ♗×g4 were extensively analysed by Christiansen. Alex Dunne expected 24. ..., ♗g8, commenting that Christiansen was trying to please the crowd with the

analysis of the other variations. Karpov spent 20 minutes on this move.



25. ♗e3×h6

Kasparov spent 16 minutes on this move. After lots of analysis at a board with Geller, Portisch, Najdorf, and others, someone shouted mate! Someone was going to win. Dzindzi liked 25. ♗f4. Fedorowicz liked 25. ♗×h6. Deep Thought liked 25. ♖f1.

25. ... ♗f8×h6  
 26. ♗g4×h6 ♗g8×h6  
 27. ♗c4×d6 ♖b5-b6

Christiansen and Wolff thought White was winning. Shamkovich and Dzindzi thought Black was ok.

28. ♗d6×e8 ♖b6×d4+

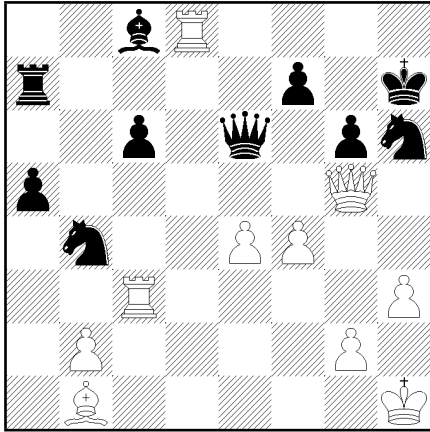
After 22 minutes of thought. Karpov was either thinking of 28. ..., ♖×d4+, 28. ..., ♖d8, or 28. resigns!

29. ♗g1-h1

Robert Byrne suggested 29. ♖e3 ♖e5.  
 29. ... ♖d4-d8

Or 29. ..., ♖e5.

30. ♖e1-d1 ♖d8×e8  
 31. ♖c1-g5 ♖a6-a7  
 32. ♖d1-d8 ♖e8-e6  
 33. f3-f4



33. ... ♖c8-a6  
 The GMs analysed 33. ..., f6 34. ♖h8+ and 33. ..., ♖d7. Deep Thought evaluated 33. ..., ♖d7 as best .

34. f4-f5 ♖e6-e7  
 35. ♖g5-d2  
 GM Suetin looked at 35. ♖h8+, ♔×h8; 36. ♖×h6+, ♔g8; 37. f×g6, f×g6; 38. ♖×c6 and if 38. ..., ♔×c6; 39. ♖a2+

35. ... ♖e7-e5  
 35. ..., ♔d5?; 36. ♖h8+!, ♔×h8; 37. ♖×h6+, ♔g8; 38. exd5  
 36. ♖d2-f2

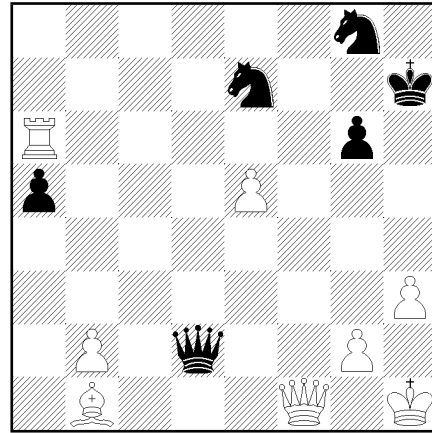
The crowd wanted to see 36. ♖g3, ♖×g3?; 37. ♖h8+, ♔×h8; 38. ♖×h8+, ♔g8; 39. f6 and 40. ♖g7 mate. Christiansen preferred 36. ♖f3 with the idea of 37. f6 and 38. ♖h8+ with the mate threat. Deep Thought preferred 36. ♖f2.

36. ... ♖e5-e7  
 Karpov had 2 minutes left to make 4 moves. Kasparov had 25 minutes left. Deep Thought looked at 36. ..., ♖e7; 37. ♖c5, ♖c7; 38. ♖d4, f6; 39. f×g6+, ♔g7; 40. ♖d6, ♔g8; 41. ♖h5, ♖c8; 42. ♖d8, ♖e6.

37. ♖f2-d4  
 Threatening 38. ♖h8 mate.  
 37. ... ♔h6-g8  
 38. e4-e5 ♔b4-d5  
 39. f5×g6+ f7×g6  
 39. ..., ♔g7; 40 ♖×c6, ♖×d8; 41 ♖×a7, ♔e7; 42 ♖d6, ♖c8; 43 g×f7 - Deep Thought.  
 40. ♖c3×c6 ♖e7×d8

Kasparov had 10 minutes left while Karpov's flag was hanging. Kasparov had the option of sealing with a likely chance of Karpov resigning before the adjourned game or playing on for 10 more minutes.

41. ♖d4×a7+ ♔d5-e7  
 42. ♖c6×a6 ♖d8-d1+  
 43. ♖a7-g1 ♖d1-d2  
 44. ♖g1-f1



Karpov resigned.

### 3 Game 3: New York, Oct 15, 1990

KARPOV-KASPAROV

KING'S INDIAN DEFENSE (E92/4)

1. d2-d4 ♔g8-f8  
 2. c2-c4 g7-g6  
 3. ♔b1-c3 ♖f8-g7  
 4. e2-e4 d7-d6  
 5. ♔g1-f3 0-0  
 6. ♖f1-e2 e7-e5  
 7. ♖c1-e3 ♖d8-e7

Kasparov played 7. ..., ♔a6 in games 5 and 7.

8. d4×e5 d6×e5  
 9. ♔c3-d5 ♖e7-d8

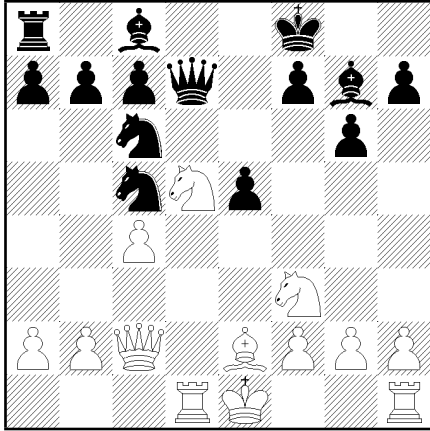
Also possible is 9. ..., ♔×d5; 10. c×d5, ♖b4+ or 9. ..., ♖d6

10. ♖e3-c5 ♔f6×e4

Not 10. ..., ♖e8?; 11. ♖e7! 1-0 Peek-Canfell, Netherlands 1988.

11. ♖c5-e7 ♖d8-d7  
 12. ♖e7×f8 ♔g8×f8  
 13. ♖d1-c2 ♔e4-c5  
 14. ♖a1-d1 ♔b8-c6





15. 0-0

Another critical variant is 15. ♘g5, ♔g8; 16. b4, ♖d8; 17. ♗×f7, ♕×f7; 18. b×c5, ♗d4; 19. ♖a4 -Deep Thought. Interesting is also 15. ♗b6, a×b6 16. ♖×d7 - Geller.

15. ... ♗c5-e6

15. ..., ♗d4; 16. ♗×d4, exd4; 17. ♖c1, ♖d6; 18. ♖fe1, ♕d7; 19. ♖f4. Or 15. ..., e4; 16. ♗g5, ♖f5; 17. ♗×h7+, ♔g8; 18. ♕g4 .  
16. ♗d5-b6

16. ♗f6, ♖e7; 17. ♗d5, ♖d7 draw.

16. ... a7×b6  
17. ♖d1×d7 ♕c8×d7  
18. ♖c2-d2 ♕d7-e8

Worth considering also 18. ..., ♗cd4 or 18. ..., ♗ed4.

19. b2-b3 e5-e4

19. ♖d8.

20. ♗f3-e1 f7-f5

Also 20. ..., ♗cd4 was considered.

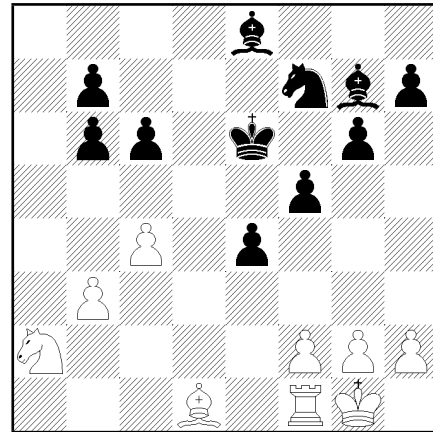
21. ♕e2-d1 ♗c6-e5

The activity of the Black pieces is impressive. All the White pieces have been constrained on the backward rows.

22. ♗e1-c2

Interesting is also 22. h4.

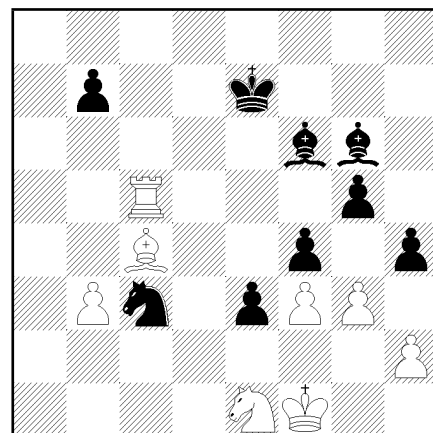
22. ... ♖a8×a2  
23. ♖d2-d5 ♕f8-e7  
24. ♗c2-b4 c7-c6  
25. ♖d5×e6+ ♕e7×e6  
26. ♗b4×a2 ♗e5-f7



A new game begins.

27. ♕d1-e2 ♗f7-d6  
28. ♗a2-b4 ♕g7-c3  
29. ♗b4-c2 f5-f4  
30. ♖f1-d1 h7-h5  
31. f2-f3 e4-e3  
32. g2-g3 g6-g5  
33. ♕e2-d3 h5-h4  
34. ♔g1-f1 c6-c5  
35. ♔f1-e2 b6-b5  
36. c4×b5 ♗d6×b5  
37. ♕d3-c4+ ♕e6-e7  
38. ♖d1-d5 ♕c3-f6  
39. ♖d5×c5 ♗b5-c3+  
40. ♔e2-f1 ♕e8-g6  
41. ♗c2-e1

The game is adjourned.



41. ... ♔e7-d6

The sealed move. GMs had analyzed 41. ..., f×g3; 42. h×g3, h3; 43. ♖c7+, ♕d6; 44. ♖×b7, e2+; (44. ..., g4; 45. ♖b6+, ♕e7; 46. ♖e6+, ♕f7; 47. ♖e3+. 44. ..., ♕c6; 45. ♖a7,

e2+; (45. ... , ♘d4; 46. ♖a6+, ♘b6; 47. ♔g1)  
 46. ♘e2 h2; (46. ... , ♘e2; 47. ♖a6+; 46. ... ,  
 ♘d4; 47. ♖a6+, ♘b6; 48. ♘d3) 47. ♔g2,  
 ♘e2; 48. ♖a6+) 45. ♔g1, ♘d4+; 46. ♔h2,  
 ♘f2; 47. ♔h3, ♘e1; 48. ♖b6+. 47. ... , ♔c6;  
 48. ♖e7. 47. ... , ♘f5+; 48. g4 .

42. ♖c5-a5

A fantasy variation is 42. ♖c8, ♘f5; 43.  
 ♖f8, ♘h3+; 44. ♔g1, ♘d4; 45. gxf4, e2+; 46.  
 ♔h1, ♘d1; 47. f×g5, ♘f2+; 48. ♔g1, ♘d3+;  
 49. ♔h1, ♘e1; 50. ♖d8+, ♔c5; 51. ♖×d4,  
 ♔×d4; 52. ♘×e2, ♔e3; 53. ... , ♔f2, 54. ... ,  
 ♘g2 mate

42. ... f4×g3

42. ... , h3; 43. g×f4, ♘d4; 44. ♖×g5.

43. h2×g3 h4×g3

43. ... , h3; 44. ♔g1.

44. ♘e1-g2 b7-b5

45. ♖a5-a6+ ♔d6-e7

46. ♖a6-a7+ ♔e7-e8

47. ♖a7-a8+ ♘f6-d8

48. ♘g2×e3

An alternative defense is 48. ♘e2.

48. ... b5×c4

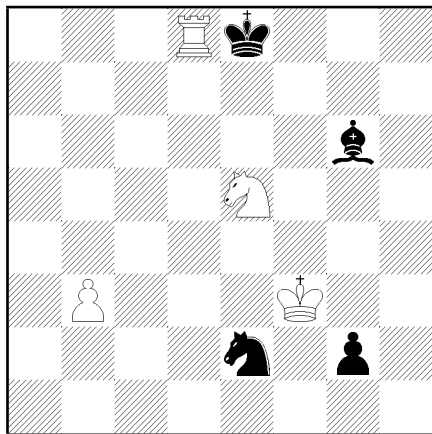
49. ♘e3×c4 g5-g4

50. ♔f1-g2 ♘c3-e2

51. ♘c4-e5 g4×f3+

52. ♔g2×f3 g3-g2

53. ♖a8×d8+



Draw

## 4 Game 4: New York, Oct 17, 1990

KASPAROV-KARPOV  
 RUY LOPEZ (C92/29)

1. e2-e4 e7-e5

2. ♘g1-f3 ♘b8-c6

3. ♘f1-b5 a7-a6

4. ♘b5-a4 ♘g8-f6

5. 0-0 ♘f8-e7

6. ♖f1-e1 b7-b5

7. ♘a4-b3 d7-d6

8. c2-c3 0-0

9. h2-h3 ♘c8-b7

10. d2-d4 ♖f8-e8

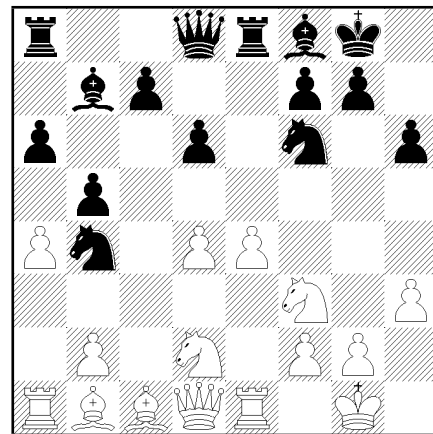
11. ♘b1-d2 ♘e7-f8

12. a2-a4 h7-h6

13. ♘b3-c2 e5×d4

14. c3×d4 ♘c6-b4

15. ♘c2-b1



15. ... c7-c5

For 15. ... , b×a4 see game 2.

16. d4-d5 ♘f6-d7

17. ♖a1-a3 f7-f5

18. e4×f5

18. e5 is also possible. The move 18. ♖ae3  
 was played in Timman-Karpov, Kuala Lumpur  
 1990 (match).

18. ... ♘d7-f6

19. ♘d2-e4 ♘b7×d5

19. ... , ♘b×d5; 20. g4.

20. ♘e4×f6+

20. ♖ae3, ♘×e4; 21. ♘×e4, d5; 22. ♘b1,  
 ♖×e3; 23. ♖×e3, d4; 24. ♖e6, d3; 25. ♘e5,  
 c4; 26. ♖f3, ♖c8; 27. ♖g3, d2; 28. ♘×d2,  
 ♖×d2; 29. ♖×f6 Horvath- Zobisch, 1988.

20. ... ♖d8×f6

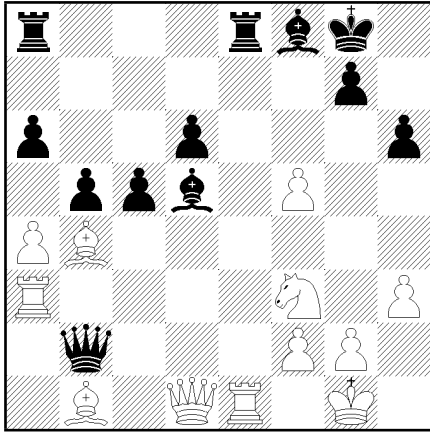
21. ♘c1-d2

Alternatives are 21. ♘h2 and 21. ♖ae3

21. ... ♖f6×b2

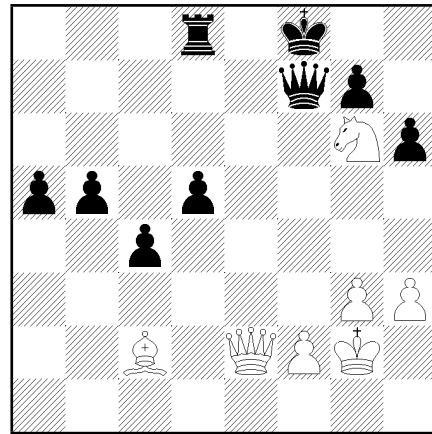
21. ... , ♘c6; 22. ♘c3. Or 21. ... , ♘×f3; 22.  
 ♖×f3, ♖×b2; 23. ♘c3 - Seirawan.

22. ♘d2×b4



22. ... ♔d5-f7!  
 A move maybe not seen by Kasparov, that certainly preferred 22. ... ♔x f3; 23. ♖x f3, ♗x b4; 24. ♖e6 (24. ♔e4, ♖x e4?; 25. ♗d5+).  
 23. ♖e1-e6  
 23. a×b5, ♗x b4; 24. ♖x e8, ♖x e8; 25. ♖x a6, ♗x b5.  
 23. ... ♗b2×b4  
 23. ... ♔x e6; 24. f×e6, ♗x b4; 25. ♗d3, ♖x e6; 26. a×b5, ♖ae8; 27. b×a6, c4; 28. ♗h7+, ♔f7; 29. ♗f5+, ♔e7; 30. ♔d4, ♖e1+.  
 24. ♖a3-b3  
 24. ♖ae3 d5; (24. ... ♗x a4; 25. ♔c2) 25. ♔a2 (25. ♖x e8 ♖x e8; 26. ♖x e8 ♔x e8; 27. ♗x d5+ ♔f7) 25. ... c4 26. ♔d4.  
 24. ... ♗b4×a4  
 25. ♔b1-c2 ♖a8-d8  
 Also 25. ... ♗a5 or 25. ... ♗a2.  
 26. ♖b3-e3 ♗a4-b4  
 27. g2-g3  
 To be considered also 27. ♗e2.  
 27. ... a6-a5  
 27. ... ♔x e6; 28. f×e6, c4; 29. ♗d5 and 30. e7+ or 30. ♗f5  
 28. ♔f3-h4 d6-d5  
 29. ♗d1-e2 ♗b4-c4  
 30. ♔c2-d3  
 30. ♖x e8, ♗x e2; 31. ♖x f8+, ♔x f8; 32. ♖x e2.  
 30. ... ♗c4-c1+  
 31. ♔g1-g2 c5-c4  
 32. ♔d3-c2 ♔f7×e6  
 33. ♖e3×e6 ♖e8×e6  
 34. ♗e2×e6+  
 34. f×e6  
 34. ... ♔g8-h8  
 35. ♔h4-g6+ ♔h8-h7  
 36. ♗e6-e2 ♗c1-g5

37. f5-f6 ♗g5×f6  
 37. ... ♗x g6; 38. ♔x g6+, ♔x g6; 39. ♗e6 - Grefe.  
 38. ♔g6×f8+ ♔h7-g8  
 39. ♔f8-g6 ♗f6-f7  
 More aggressive is 39. ... d4!; 40. ♔f5, ♗c6+ and 41. ... ♖e8 - Najdorf.  
 40. ♔g6-e7+ ♔g8-f8  
 41. ♔e7-g6+  
 The sealed move. Karpov offered a draw and Kasparov accepted.



## 5 Game 5: New York, Oct 22, 1990

KARPOV-KASPAROV

KING'S INDIAN DEFENSE (E94/4)

- |    |        |        |
|----|--------|--------|
| 1. | d2-d4  | ♔g8-f6 |
| 2. | c2-c4  | g7-g6  |
| 3. | ♔b1-c3 | ♔f8-g7 |
| 4. | e2-e4  | d7-d6  |
| 5. | ♔g1-f3 | 0-0    |
| 6. | ♔f1-e2 | e7-e5  |
| 7. | ♔c1-e3 | ♔b8-a6 |
| 8. | 0-0    |        |

An alternative is 8. d×e5.

- |  |              |        |
|--|--------------|--------|
| 8.   | ...          | c7-c6  |
| 8. ... ♗e8; (8. ... ♔g4 - game 7)                  | 9. d×e5,     | ♔g4.   |
| 9.   | d4×e5        |        |
| 9. d5, (9. ♗c2) ♔g4; 10. ♔g5, f6; 11. ♔d2,         | ♔h6 - Dlugy. |        |
| 9.   | ...          | d6×e5  |
| 10.  | ♗d1×d8       | ♖f8×d8 |
| 11.  | ♖f1-d1       |        |
| 11. ♔×e5!?, ♔×e4; 12. ♔×e4, ♔×e5; 13. ♔g5 - Dlugy. |              |        |

11. ... ♖d8-e8  
 12. h2-h3

12. c5, ♗g4; 13. ♕×a6, ♗×e3; 14. f×e3, b×a6; 15. ♖d6 - Dlugy.

12. ... ♗g7-f8  
 13. ♗f3-d2 b7-b6

13. ..., ♗c5; 14. ♗g5, ♖g7; 15. ♗b3 - Rohde.

14. a2-a3 ♗a6-c5  
 15. b2-b4 ♗c5-e6  
 16. ♗d2-b3

16 ♗f3 - Dlugy.

16. ... ♗c8-a6

16. ..., a5; 17. b×a5, b×a5; 18. ♗a4, ♗×e4; 19. ♗f3, f5; 20. ♗×e4, f×e4; 21. ♗bc5; 16. ..., ♗d4; 17. ♖a2, ♖ad8; 18. ♖ad2, ♖×d2; 19. ♖×d2 - Salov.

17. f2-f3

17 ♖f1 - Dzindzi.

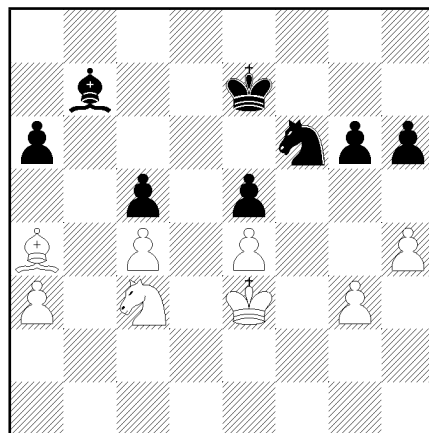
17. ... ♗f6-h5  
 18. ♗e3-f2 ♖e8-d8  
 19. ♗e2-f1 ♗h5-f4

19. ..., ♖×d1; 20. ♖×d1, ♖d8; 21. ♖×d8, ♗×d8; 22. c5!, ♗×f1; 23. c×b6!, ♗a6; 24. b×a7, ♗b7; 25. ♗a5, ♗a8; 26. ♗a4 - Dlugy.

20. g2-g3

20. ♗h4 - Dlugy.

20. ... ♗f4-h5  
 21. ♖g1-g2 f7-f5  
 22. ♖a1-b1 ♖a8-c8  
 23. ♖d1×d8 ♖c8×d8  
 24. ♖b1-d1 ♖d8×d1+  
 25. ♗c3×d1 f5×e4  
 26. f3×e4 c6-c5  
 27. b4×c5 ♗e6×c5  
 28. ♗b3×c5 ♗f8×c5  
 29. ♗f2×c5 b6×c5  
 30. ♗d1-c3 ♗h5-f6  
 31. ♖g2-f3 ♗a6-b7  
 32. ♗f1-d3 ♖g8-f8  
 33. h3-h4 h7-h6  
 34. ♗d3-c2 ♖f8-e7  
 35. ♗c2-a4 a7-a6  
 36. ♖f3-e3



Draw

## 6 Game 6: New York, Oct 24, 1990

KASPAROV-KARPOV  
 RUY LOPEZ (C92/15)

1. e2-e4 e7-e5  
 2. ♗g1-f3 ♗b8-c6  
 3. ♗f1-b5 a7-a6  
 4. ♗b5-a4 ♗g8-f6  
 5. 0-0 ♗f8-e7  
 6. ♖f1-e1 b7-b5  
 7. ♗a4-b3 d7-d6  
 8. c2-c3 0-0  
 9. h2-h3 ♗f6-d7  
 10. d2-d4 ♗e7-f6  
 11. a2-a4 ♗c8-b7  
 12. a4×b5

Kasparov played 12. ♗e3 in game 8 and 12. ♗a3 in game 12.

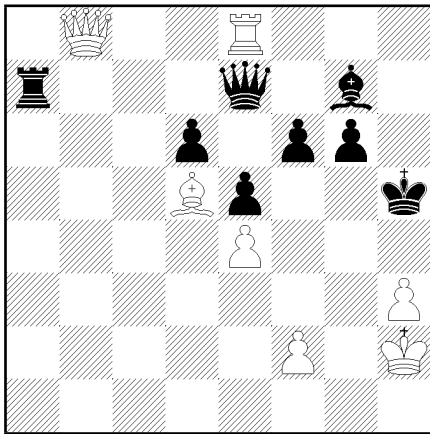
12. ... a6×b5  
 13. ♖a1×a8 ♖d8×a8  
 14. d4-d5 ♗c6-a5  
 15. ♗b3-c2 ♗a5-c4  
 16. b2-b3 ♗c4-b6  
 17. ♗b1-a3 ♗b7-a6  
 18. ♗f3-h2

18. ♗d3, c6 = - deFirmian.

18. ... c7-c6  
 19. d5×c6 ♖a8×c6  
 20. ♗c1-d2 ♗f6-e7  
 21. ♗h2-g4 ♖f8-a8  
 22. ♗g4-e3  
 22 ♖c1 - Deep Thought; 22 ♗b1 - Valvo.  
 22. ... ♗d7-f6  
 23. ♗e3-f5 ♗e7-f8

24. ♖d2-g5 ♜b6-d7  
 25. c3-c4 b5×c4  
 26. b3×c4  
 26 ♞×c4, ♙×c4; 27 b×c4, ♜×c4; 28. ♙b3,  
 ♜b4; 29. ♜e3, ♞×e4; 30. ♙×f7+, ♚×f7; 31.  
 ♜d5+, ♚g6 -Deep Thought.

26. ... ♙a6×c4  
 27. ♞a3×c4 ♜c6×c4  
 28. ♙c2-b3 ♜c4-c3  
 29. ♚g1-h2 h7-h6  
 30. ♙g5×f6 ♞d7×f6  
 31. ♜e1-e3 ♜c3-c7  
 32. ♜e3-f3 ♚g8-h7  
 33. ♞f5-e3 ♜c7-e7  
 34. ♞e3-d5 ♞f6×d5  
 35. ♙b3×d5 ♜a8-a7  
 36. ♜d1-b3 f7-f6  
 37. ♜b3-b8 g7-g6  
 38. ♜f3-c3 h6-h5  
 39. g2-g4 ♚h7-h6  
 40. g4×h5 ♚h6×h5  
 41. ♜c3-c8 ♙f8-g7  
 42. ♜c8-e8



The sealed move. A draw was agreed the next day.

## 7 Game 7: New York, Oct 28, 1990

KARPOV-KASPAROV  
 KING'S INDIAN DEFENSE (E92/2)

1. d2-d4 ♞g8-f6  
 2. c2-c4 g7-g6  
 3. ♞b1-c3 ♙f8-g7  
 4. e2-e4 d7-d6  
 5. ♞g1-f3 0-0  
 6. ♙f1-e2 e7-e5

7. ♙c1-e3 ♞b8-a6

Kasparov played 7. ..., exd4 in game 11.

8. 0-0 ♞f6-g4

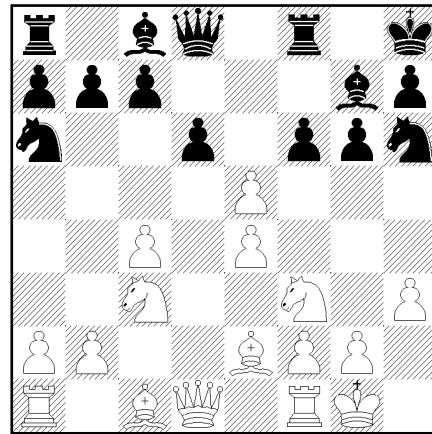
9. ♙e3-g5 f7-f6

9. ..., ♜e8.

10. ♙g5-c1 ♚g8-h8

11. h2-h3 ♞g4-h6

12. d4×e5



12. ... f6×e5?!

Tal disliked this move, saying that 12. ..., d×e5 was necessary.

13. ♙c1-e3

13 ♙g5, ♜e8; 14 ♞d5, ♞g8.

13. ... ♞h6-f7

14. ♜d1-d2 ♞a6-c5

14. ..., ♞e6 and 15. ..., c5 - Rohde.

15. ♞f3-g5

15. b4, ♞e6. Or 15. ♙×c5, d×c5; 16. ♜e3 - Tal.

15. ... ♞f7×g5

15. ..., ♞e6 - Shamkovich.

16. ♙e3×g5 ♙g7-f6

16. ..., ♜e8.

17. ♙g5-e3

17. ♙h6

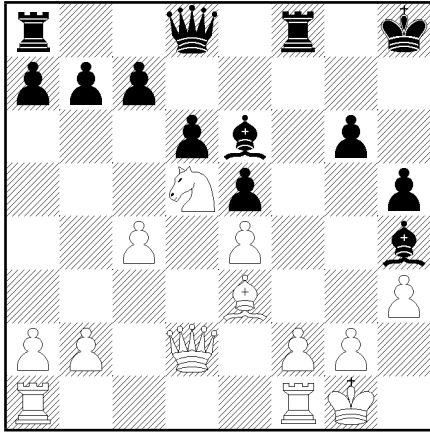
17. ... ♞c5-e6

18. ♙e2-g4 h7-h5

18. ..., ♞d4; 19. ♙×c8, ♜×c8 (19. ..., ♜×c8; 20. ♙×d4, exd4; 21. ♞b5) 20. ♙×d4, exd4; 21. ♞b5, ♜e7.

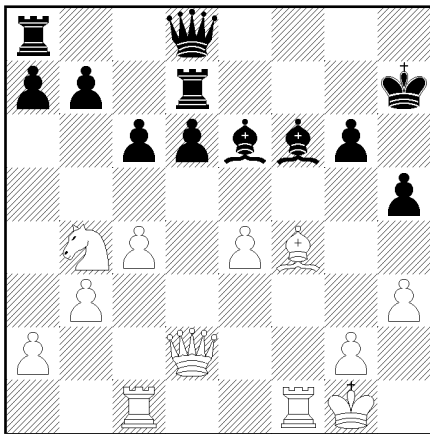
19. ♙g4×e6 ♙c8×e6

20. ♞c3-d5 ♙f6-h4



21. ♖a1-c1  
 21. ♙×a7 ♖×a7 (21. ... , g5!? or 21. ... , ♙×d5) 22. ♗h6+ ♔g8 23. ♚×g6+ - Shamkovich; 21. f4 c6 (21. ... , exf4 22. ♘×f4, ♙f7 23. ♙d4+, ♔h7; 24. ♘d5) 22. f×e5, d×e5 (22. ... , c×d5; 23 c×d5) 23. ♙c5 - Chow.

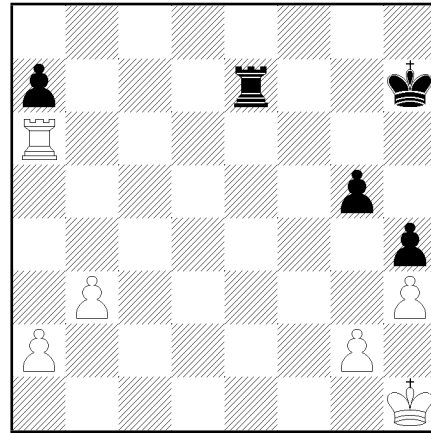
21. ... ♔h8-h7  
 22. ♖c1-c3  
 22. f4, e×f4 and 23. ... , ♗b6 - Tal.  
 22. ... ♖f8-f7  
 23. b2-b3 c7-c6  
 24. ♘d5-b4 ♖f7-d7  
 25. ♖c3-c1 ♙h4-f6  
 26. f2-f4 e5×f4  
 27. ♙e3×f4



27. ... ♗d8-a5?  
 Probably this was the worst error by Kasparov in this Championship. Karpov finds an immediate refutation. More sensate were 27. ... , ♙e5 or 27. ... , ♗e7.  
 28. ♘b4-d5 ♗a5-c5+  
 29. ♔g1-h1

29. ♙e3, ♙g5; 30. ♘f6+, ♔h6; (30. ... , ♔g7) 31. ♙×c5, ♙×d2; 32. ♖cd1, ♗dd8.  
 29. ... ♙e6×d5  
 30. c4×d5 ♗c5-d4  
 30. ... , ♗b5 31 a4 ♗×b3 32 d×c6 b×c6 33 e5 - Rohde.

31. d5×c6 b7×c6  
 32. ♖c1×c6 ♖a8-e8  
 33. ♖c6-c4 ♗d4×d2  
 34. ♙f4×d2 ♙f6-e5  
 35. ♙d2-e3 ♙e5-g3  
 36. ♖f1-f3 h5-h4  
 37. ♙e3-f2 ♙g3×f2  
 37. ... , ♖de7; 38. ♙×g3, h×g3; 39. ♖×g3, ♖×e4; 40. ♖×e4, ♖×e4; 41. ♖g5 - Dzindzi.  
 38. ♖f3×f2 ♖d7-e7  
 39. ♖f2-f4 g6-g5  
 40. ♖f4-f6 ♖e7×e4  
 41. ♖c4×e4 ♖e8×e4  
 42. ♖f6×d6 ♖e4-e7  
 43. ♖d6-a6



Kasparov resigns.

## 8 Game 8: New York, Oct 29, 1990

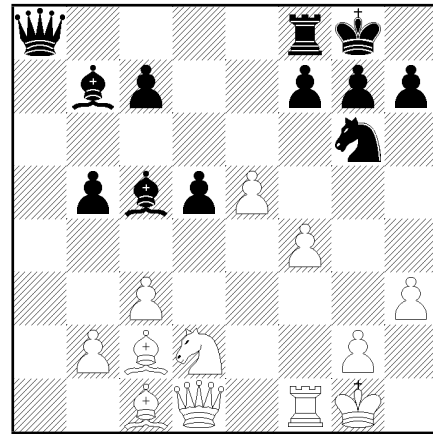
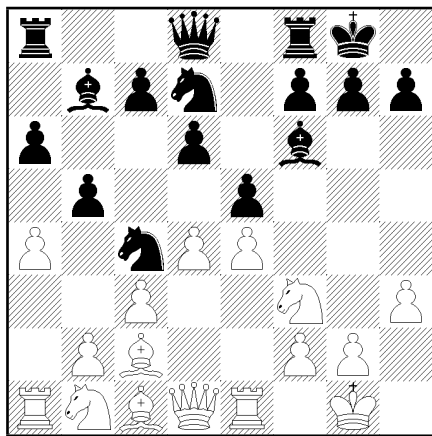
KASPAROV-KARPOV  
 RUY LOPEZ (C92/15)

1. e2-e4 e7-e5  
 2. ♘g1-f3 ♘b8-c6  
 3. ♙f1-b5 a7-a6  
 4. ♙b5-a4 ♘g8-f6  
 5. 0-0 ♙f8-e7  
 6. ♖f1-e1 b7-b5  
 7. ♙a4-b3 d7-d6  
 8. c2-c3 0-0  
 9. h2-h3 ♘f6-d7

10.            d2-d4            ♖e7-f6  
 11.            a2-a4            ♜c8-b7  
 12.            ♙c1-e3

Kasparov played 12. a×b5 in game 6 and  
 12. ♖a3 in game 12.

12.            ...            ♞c6-a5  
 13.            ♙b3-c2            ♞a5-c4  
 14.            ♙e3-c1



14.            ...            d6-d5  
 New move. Usual is 14. ..., ♞cb6.  
 15.            d4×e5            ♞c4×e5  
 16.            ♙f3×e5            ♞d7×e5  
 17.            a4×b5  
 17 f4 ♞c4 18 e5 ♙h4 - Shamkovich.  
 17.            ...            a6×b5  
 17. ..., d×e4 18. ♙×d8 ♜f×d8 19. b×a6.  
 18.            ♜a1×a8            ♙d8×a8  
 18. ..., ♙×a8; 19. e×d5, ♙×d5; 20. ♙×d5,  
 ♙×d5; 21. ♙f4, ♞c4; 22. b3, ♞d6; 23. ♙×d6,  
 c×d6; 24. ♜d1, ♙e6.  
 19.            f2-f4            ♞e5-g6  
 20.            e4-e5            ♙f6-h4  
 21.            ♜e1-f1            ♙h4-e7  
 21. ..., d4; 22. ♙e2 (22. ♙g4, ♙e4).  
 22.            ♞b1-d2            ♙e7-c5+  
 22. ..., d4 (22. ..., f5; 23. g4 or 23. ♞f3, c5)  
 23. ♙e2! (23. c×d4, ♙×g2; 24. ♜f2, ♙h3; 25.  
 ♙e2).

23.            ♙g1-h2            d5-d4

23. ..., ♙e3 24. ♞f3 ♙×c1 (24. ..., ♙×f4+  
 25. ♙×f4 ♞×f4 26. ♙×h7+ or 26 ♞b5).

24.            ♜d1-e2

24 ♞b3 ♞b6 25 ♙e2.

24.            ...            d4×c3

25.            b2×c3

25 ♞e4 ♙×e4 (25. ..., c×b2 26 ♙×b2) 26  
 ♙×e4 ♙a2.

25.            ...            ♜f8-d8

25. ..., ♜e8 26 ♞e4 ♞×e5!? - Rohde.

26.            ♞d2-e4            ♙c5-a3

27.            ♙c1×a3            ♙b7×e4

27. ..., ♙×a3? 28 e6! f×e6 29 ♞g5 - Dlugy.

28.            ♙e2×e4            ♙a8×a3

29.            f4-f5            ♞g6-e7

29. ..., ♞f8 30 e6 f×e6 31 f×e6 ♙d6+ 32  
 ♙h1 ♙×e6 33 ♜×f8+.

30.            ♙e4-h4            f7-f6

31.            ♙h4-g3            ♙g8-f8

32.            ♙h2-h1            ♙a3-c5

33.            e5×f6            g7×f6

34.            ♙c2-b3            ♞e7-d5

35.            ♙g3-h4            ♙f8-g7

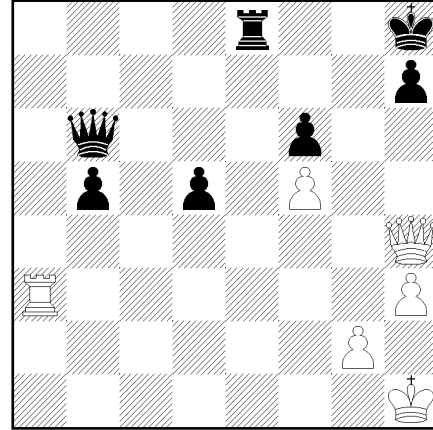
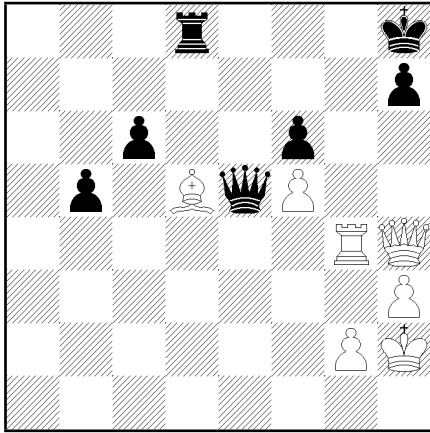
36.            ♜f1-d1            c7-c6

37.            ♜d1-d4            ♙c5×c3

38.            ♜d4-g4+            ♙g7-h8

39.            ♙b3×d5            ♙c3-a1+

40.            ♙h1-h2            ♙a1-e5+



41. ♖g4-g3

The sealed move.

41. ... ♗c6×d5  
 42. ♖h4-g4 ♗e5-c7  
 43. ♖g4-d4 ♗c7-d6  
 44. ♔h2-h1

53. ♕h4-b4

53. ♖g3??, ♗e1+; 54. ♔h2, ♖g1 mate.  
 53. ... ♗d5-d4

44. h4 (44. ♖g4 ♗d7! 45. ♗d4 ♖×f5)  
 44. ..., d4; 45. ♗d3 b4; 46. h5 ♗g8; 47. ♖×d4,  
 ♖×d4; 48. ♗×d4, ♗b8; 49. h6, b3; 50. ♗d1,  
 b2; 51. ♗b1, ♔g8; 52. ♔g3, ♔f7; 53. ♔f4,  
 ♔e7; 54. ♔e4, ♔d6; 55. ♔d4, ♗b7; 56. ♔c3,  
 ♔e5; 57. ♗×b2, ♗×b2; 58. ♔×b2, ♔×f5; 59.  
 ♔c3, ♔g5; 60. ♔d4, ♔×h6; 61. ♔e4, ♔g5;  
 62. ♔f3 draws - Ljubojevic.

44. ... ♗d8-e8  
 45. ♗d4-g4 ♗d6-d7  
 46. ♗g3-d3 ♗e8-e1+  
 47. ♔h1-h2 ♗e1-e4  
 48. ♖g4-g3

48. ♗d1? (48. ♖×e4??, ♖c7+) ♗d6+; 49.  
 ♔g1 ♖e5 threatening 50. ..., ♗e1+.

48. ... ♗e4-e5

48. ..., ♖×f5; 49. ♖b8+ and 50. ♖×b5

49. ♗d3-a3 ♗e5-e8  
 50. ♖g3-f4 ♗d7-b7  
 51. ♔h2-h1 ♖b7-b8  
 52. ♖f4-h4 ♖b8-b6

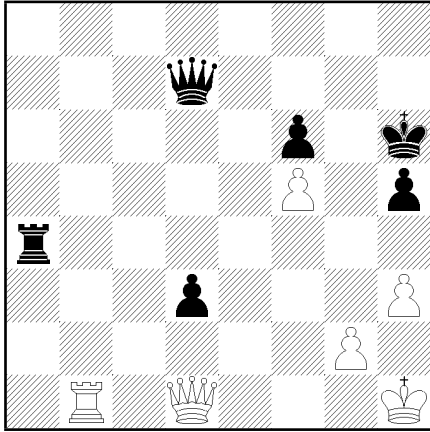
53. ..., ♖f2.

54. ♗a3-g3 ♗b6-c7  
 55. ♗g3-d3 ♖c7-c1+  
 56. ♔h1-h2 ♖c1-f4+  
 57. ♔h2-g1 ♖f4-c1+  
 58. ♔g1-h2 ♖c1-f4+  
 59. ♔h2-g1 ♗e8-c8

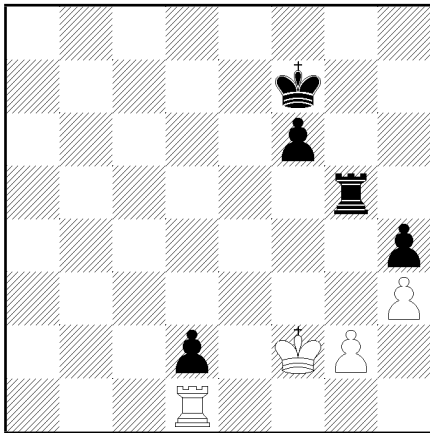
59. ..., ♔g7; 60. ♗×d4, ♗e1+ wins.

60. ♗d3-d1 ♗c8-d8  
 61. ♖b4×b5 ♖f4-e3+  
 62. ♔g1-h1 d4-d3  
 63. ♖b5-a5 ♖e3-d4  
 64. ♖a5-a1 ♖d4-b6  
 65. ♖a1-a2 ♔h8-g7  
 66. ♖a2-d2 ♖b6-c5  
 67. ♗d1-f1 ♗d8-d4  
 68. ♗f1-f3 ♖c5-d6  
 69. ♗f3-e3 ♗d4-a4  
 70. ♗e3-e1 h7-h5  
 71. ♗e1-b1 ♖d6-d7  
 72. ♖d2-d1 ♔g7-h6





- |     |         |         |
|-----|---------|---------|
| 73. | ♔d1-d2+ | ♔h6-g7! |
| 74. | ♔d2-e3  | h5-h4   |
| 75. | ♔e3-f3  | ♔g7-h6  |
| 76. | ♔f3-e3+ | ♔h6-g7  |
| 77. | ♔e3-f3  | d3-d2   |
| 78. | ♔f3-h5  | ♔d7-f7  |
| 79. | ♔h5-f7+ | ♔g7-f7  |
| 80. | ♖b1-d1  | ♖a4-d4  |
| 81. | ♗h1-g1  | ♖d4-d5  |
| 82. | ♗g1-f2  | ♖d5-f5+ |
| 83. | ♗f2-e2  | ♖f5-g5  |
| 84. | ♗e2-f2  |         |



Draw on Karpov's offer

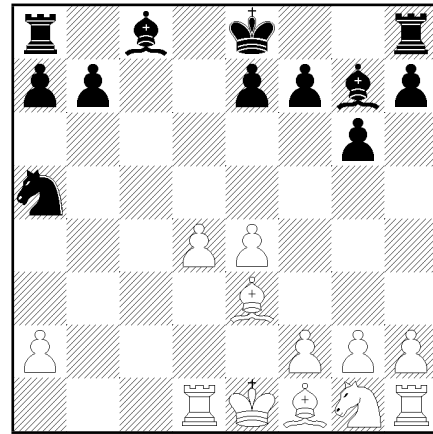
## 9 Game 9: New York, Oct 31, 1990

KARPOV-KASPAROV

GRUNFELD (D85/5)

1. d2-d4 ♘g8-f6

- |          |        |        |
|----------|--------|--------|
| 2.       | c2-c4  | g7-g6  |
| 3.       | ♞b1-c3 | d7-d5  |
| 4.       | c4×d5  | ♞f6×d5 |
| 5.       | e2-e4  | ♞d5×c3 |
| 6.       | b2×c3  | ♞f8-g7 |
| 7.       | ♞c1-e3 | c7-c5  |
| 8.       | ♞d1-d2 | c5×d4  |
| 8. ...   | O-O.   |        |
| 9.       | c3×d4  | ♞b8-c6 |
| 10.      | ♞a1-d1 |        |
| 10. ♞f3. |        |        |
| 10.      | ...    | ♞d8-a5 |
| 11.      | ♞d2×a5 | ♞c6×a5 |



12. ♞g1-f3

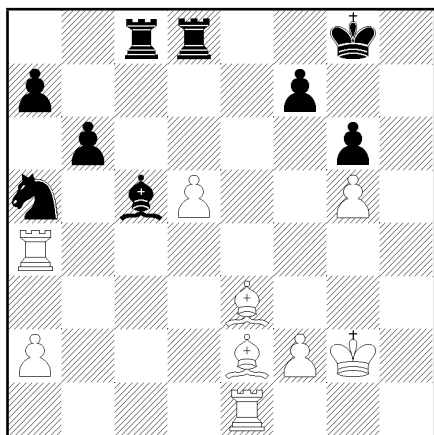
A new move. Yusupov played 12 ♞d3 against Gulko at Linares 1989.

- |         |   |        |
|---------|---|--------|
| 12.     | ...                                       | O-O    |
| 13.     | ♞f1-e2                                    | ♞c8-d7 |
| 14.     | ♞e3-d2                                    | b7-b6  |
| 15.     | O-O                                       | ♖f8-d8 |
| 16.     | ♞d1-c1                                    | ♞d7-g4 |
| 17.     | d4-d5                                     | ♞a5-b7 |
| 17. ... | f5 (17. ... e6; 18. ♞×a5, b×a5; 19. ♞c4!) |        |
| 18.     | ♞d3, f×e4; 19. ♞×e4, ♞f5!? -              |        |

- Wolff.  
18. h2-h3  
18. ♖c7, ♞c5!; 18. ♞b4, e6!

- |     |        |        |
|-----|--------|--------|
| 18. | ...    | ♞g4×f3 |
| 19. | ♞e2×f3 | ♞b7-c5 |
| 20. | ♞d2-e3 | ♖a8-c8 |
| 21. | ♞f3-g4 | ♖c8-b8 |
| 22. | ♞c1-c4 | h7-h5  |
| 23. | ♞g4-f3 | e7-e6  |
| 24. | ♞f1-e1 | e6×d5  |
| 25. | e4×d5  | ♞g7-e5 |
| 26. | g2-g4  | h5×g4  |
| 27. | h3×g4  | ♞c5-b7 |
| 28. | ♞c4-a4 | ♞b7-a5 |

29.           g4-g5               ♖b8-c8  
 30.           ♙f3-e2             ♙e5-d6  
 31.           ♚g1-g2             ♙d6-c5



32.           ♙e3-d2?

A rare blunder of Karpov's. He throws away an entire strategy! 32. ♙c1 (32. ♙f4, ♙d6; 33. ♙d2) ♙e7 (32. ..., ♙f8; 33. ♙b2, ♙g7; 34. ♙f6, ♖d6; 35. ♙d7, ♖d7; 36. ♙g4) 33. ♖e4 (33. ♖h4, ♖×c1 and 34. ..., ♙×g5) 33. ..., ♖c7; 34. ♙f4, ♖cd7 (34. ..., ♙d6; 35. ♙×d6, ♖×d6; 36. ♖e8+, ♚g7; 37. ♖h1, ♖×d5; 38. f4, f6; 39. ♖eh8 wins) 35. ♙b5, ♖×d5; 36. ♖×d5, ♖×d5; 37. ♖×e7, ♖×b5; 38. ♖e8+, ♚g7; 39. ♙e5+, f6; 40. ♙×f6+, ♚f7; 41. ♖e7+ and 42. ♖×a7 wins.

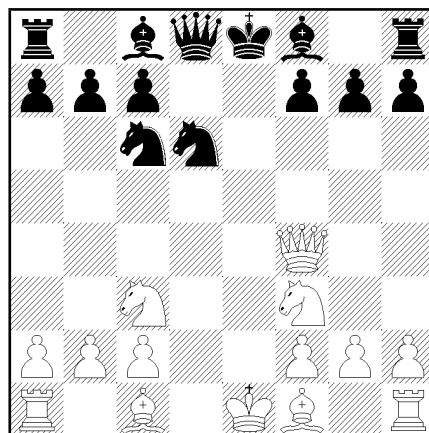
32.           ...               ♖d8×d5  
 33.           ♙e2-f3             ♖d5-d8  
 34.           ♙d2×a5

Draw

## 10 Game 10: New York, Nov 2, 1990

KASPAROV-KARPOV  
 PETROFF (C43/19)

1.           e2-e4               e7-e5  
 2.           ♗g1-f3             ♗g8-f6  
 3.           d2-d4               e5×d4  
 4.           e4-e5               ♗f6-e4  
 5.           ♖d1×d4               d7-d5  
 6.           e5×d6               ♗e4×d6  
 7.           ♗b1-c3             ♗b8-c6  
 8.           ♖d4-f4



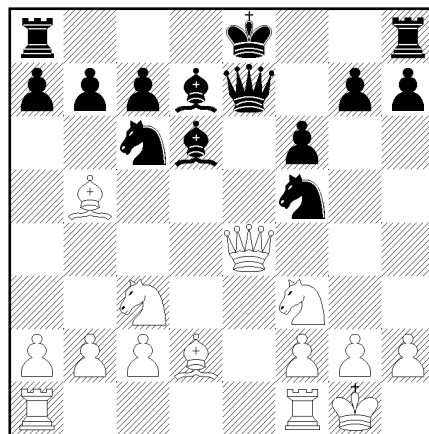
8.           ...               ♗d6-f5!?

New move. Other tries are 8. ..., g6, 8. ..., ♙e7, 8. ..., ♙e6, 8. ..., ♙f5.

9.           ♙f1-b5               ♙f8-d6  
 10.          ♖f4-e4+           ♖d8-e7  
 11.          ♙c1-g5

11 ♙e3 (11 O-O ♖×e4 or 11. ..., ♙d7 12 ♙×c6+) ♗×e3 (11. ..., ♖×e4 12 ♗×e4 ♗×e3 13 ♗×d6+ c×d6 14 f×e3) 12 ♙×c6+ ♙×c6 13 ♖×c6+ ♗f8 14 f×e3 ♖×e3+ 15 ♗e2 - Benjamin.

11.          ...               f7-f6  
 11. ..., ♖e6 12 O-O-O O-O - Wilder.  
 12.          ♙g5-d2             ♙c8-d7  
 13.          0-0

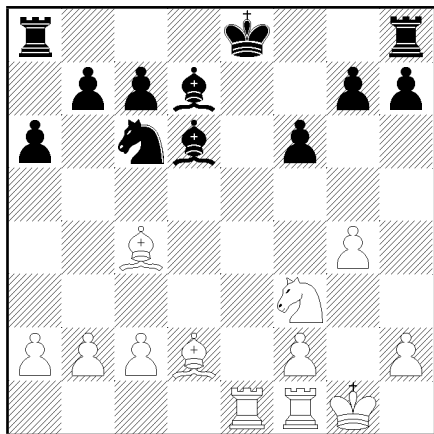


White threatens 14 ♙×c6 ♙×c6? 15 ♖×f5. Tal preferred 13. O-O-O, ♖×e4; 14. ♗×e4, ♙e7; 15. ♙f4, O-O-O; 16. g4, g5; (16. ..., ♗fd4; 17. ♖×d4!).

13.          ...               ♖e7×e4  
 14.          ♗c3×e4             ♙d6-e7  
 14. ..., O-O-O 15 g4 ♗fe7 - Dzindzi.

15.                   g2-g4  
 15 ♖f4 (15 ♖c3 - Wilder) O-O-O 16 g4 g5  
 - Shamkovich.

15.                   ...                   a7-a6  
 15. ..., ♘d6 16 ♗×d6+ (16 ♖×d6+ ♖×d6  
 17 ♖de1+ ♗e7 18 ♗d4 - Kamsky) ♖×d6 17  
 ♖he1+ ♗e7 18 ♖×d7+ ♗×d7.  
 16.                   ♖b5-c4                   ♗f5-d6  
 17.                   ♗e4×d6                   ♖e7×d6  
 18.                   ♖a1-e1+



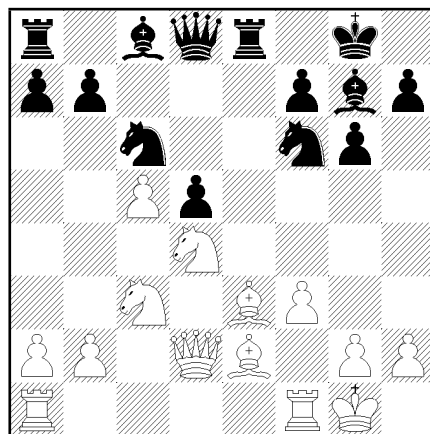
Draw offered by Kasparov.

11.                   e4×d5                   c6×d5  
 12.                   0-0                   ♗b8-c6

A game Gligoric-Fischer, Stokolm 1962, continued 12. ..., d×c4 13 ♖ad1, a6; 14. ♖×c4 b5; 15. ♖b3, ♖b7; 16. ♖f2 and White is slightly better.

13.                   c4-c5

A move quite new. Kasparov has studied last theory, but Kasparov did not sleep!



## 11 Game 11: New York, Nov 5, 1990

KARPOV-KASPAROV

KING' INDIAN (E92/13)

1.                   d2-d4                   ♗g8-f6  
 2.                   c2-c4                   g7-g6  
 3.                   ♗b1-c3                   ♖f8-g7

Back to the King's Indian! The Grunfeld is too dangerous!

4.                   e2-e4                   d7-d6  
 5.                   ♗g1-f3                   0-0  
 6.                   ♖f1-e2                   e7-e5  
 7.                   ♖c1-e3                   e5×d4

Kasparov tries another road. 7. ..., ♗a6 - game 7.

8.                   ♗f3×d4                   ♖f8-e8  
 9.                   f2-f3

A game Kamski-Tal, New York 1990, continued 9. ♖c2, ♖e7; 10.f3, c6; 11. g4.

9.                   ...                   c7-c6  
 10.                   ♖d1-d2

More common is 10. 00, d5; 11. c×d5, ♗×d5; 12. ♗×d5, c×d5; 13. ♖b3, ♗c6.

10.                   ...                   d6-d5

13.                   ...                   ♖e8×e3

A new move. Previously were played 13. ..., ♖e7, 13. ..., ♖d7, and 13. ..., ♗h5.

14.                   ♖d2×e3                   ♖d8-f8

Not immediately 14. ..., ♗g4; 15. ♗×c6, ♗×e3; 16. ♗×d8.

15.                   ♗d4×c6                   b7×c6  
 16.                   ♗g1-h1

Ljubojevich suggested the more aggressive 15. ♗d1, ♖b8; 16. ♗h1.

16.                   ...                   ♖a8-b8

Deep Thought recommended 16. ..., ♖f5.

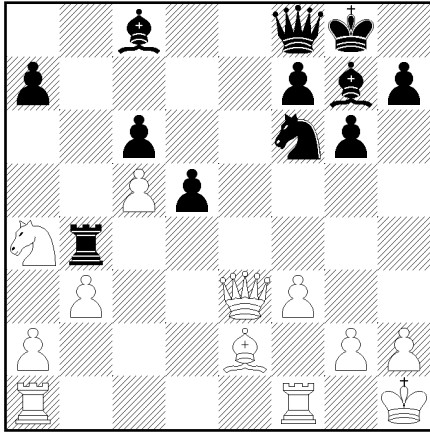
17.                   ♗c3-a4

17. ♖d2 (17. b3?, d4; 18. ♖×d4, ♗d5 wins the knight) 17. ..., ♖×c5.

17.                   ...                   ♖b8-b4

17. ..., ♖f5 - Shamkovich.

18.                   b2-b3



18. ... ♘c8-e6?

An insolit lost time by the World Champion. 18. ... , ♟h5 19 ♖ad1 ♜h4 (19. ... , ♘h6 20 ♚f2 - ♘enjamin; 20 ♚c3 - Wolff) 20 ♚f2 ♜xh2+ (20. ... , ♚e7 - Christiansen) 21 ♚xh2 ♘e5+ - Dzindzi.

19. ♘a4-b2

A forced move, according to Kasparov. 19 ♖ad1 ♚b8 20 ♟b2 ♟h5 21 ♟d3 ♜h4 22 f4? ♘d4!; 22 ♚f3? ♘g4 - Benjamin; 19 ♖ac1? ♘h6 20 ♚c3 ♜h4; 19 ♖ae1 ♜h4 (or 19. ... , ♘h6) 20 f4

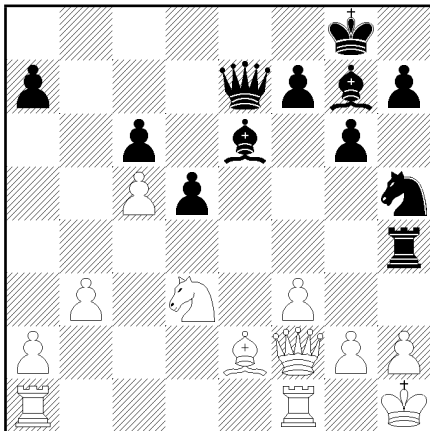
19. ... ♟f6-h5

19. ... , ♟d7 - Deep Thought.

20. ♟b2-d3 ♜b4-h4

Threatening 21. ... , ♘d4 22 ♚x d4? ♟g3+ 23 ♚g1 ♟x e2+ and 24. ... , ♟x d4.

21. ♚e3-f2 ♚f8-e7



The idea is 21. ... , g5 and 22. ... , ♘d4 and 23. ... , ♚h6.

22. g2-g4

22 ♖ac1 ♘d4 23 ♚e1 ♘f5 24 g4 ♚x e2 25 ♚x e2 ♟g3+ 26 ♚g2 ♟x e2 27 g x f5 ♟x c1 - Shamkovich.

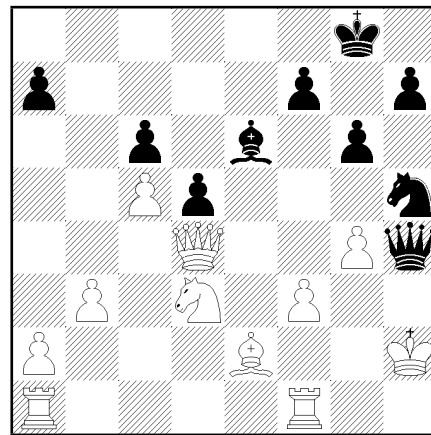
22. ... ♘g7-d4

23. ♚f2 x d4

23 ♚g2 - Kamsky.

23. ... ♜h4 x h2+

24. ♚h1 x h2 ♚e7-h4+



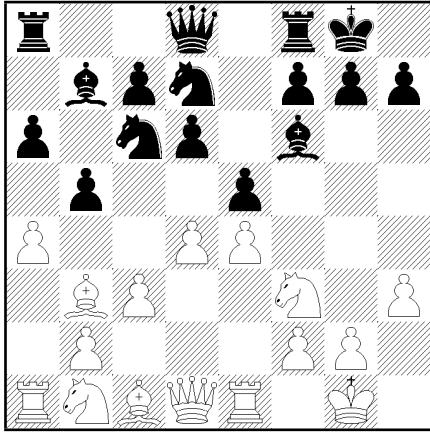
Draw by perpetual check.

## 12 Game 12: New York, Nov 7, 1990

KASPAROV-KARPOV

RUY LOPEZ (C92/15)

- |     |        |        |
|-----|--------|--------|
| 1.  | e2-e4  | e7-e5  |
| 2.  | ♟g1-f3 | ♟b8-c6 |
| 3.  | ♘f1-b5 | a7-a6  |
| 4.  | ♘b5-a4 | ♟g8-f6 |
| 5.  | 0-0    | ♘f8-e7 |
| 6.  | ♜f1-e1 | b7-b5  |
| 7.  | ♘a4-b3 | d7-d6  |
| 8.  | c2-c3  | 0-0    |
| 9.  | h2-h3  | ♟f6-d7 |
| 10. | d2-d4  | ♘e7-f6 |
| 11. | a2-a4  | ♘c8-b7 |



12. ♖b1-a3

The most common continuation. 12 a×b5 - game 6; 12 ♕e3 - game 8.

12. ... ♗e5×d4

12. ... ♗b8 is too passive, but more normal is 12. ... ♗b6.

13. ♗c3×d4 ♗c6-a5

A game Adams-Short, 1987, continued 13. ... ♗e8; 14. ♗d2, ♗e7; 15. ♕c2, ♗e8 with an even game.

14. ♕b3-a2

Not 14. a×b5?, a×b5; 15. ♗×b5, ♗×b3; 16. ♗×a8, ♗×a8 17. ♗×b3, ♕×e4 because this loses the bishops' pair.

14. ... ♗b5-b4

15. ♗a3-c4 ♗a5×c4

16. ♕a2×c4 ♗f8-e8

16. ... d5 is not sufficient, because after 17. ♕×d5, ♕×d5; 18. exd5, both 18. ... ♗b6 19. a5, ♗×d5; 20. ♗c2 and 18. ... a5; 19. ♗c2, ♗b6; 20. ♕f4, ♗ ... d5; 21. ♕e5 are good for White.

17. ♗d1-b3 ♗e8×e4

Almost forced. On 17. ... ♗e7 follows 18. ♗g5!

18. ♕c4×f7+ ♗g8-h8

Avoiding 18. ... ♗f8 19. ♕g8!, ♗×e1; 20. ♗×e1, ♗e7; 21. ♕e3

19. ♕c1-e3

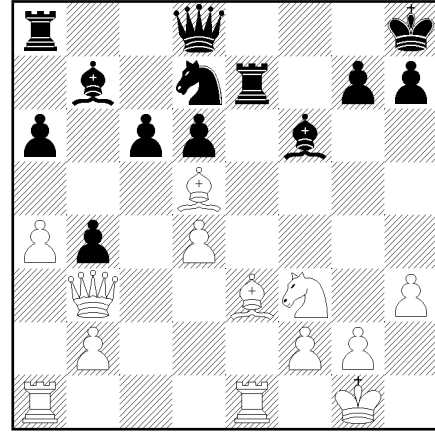
White does not like 19 ♗×b4?, ♗×e1; 20 ♗×e1, ♗e7!; 21 ♕e3, ♗b8!, and now 22 ♗c4, d5!; 23 ♕×d5, ♗b6! or 22. ♕c4, ♕×g2!

19. ... ♗e4-e7

Black has to rearrange his pieces. After 19. ... a5 follows 20. ♕e6! and then ♗d2 and ♕f5 with initiative.

20. ♕f7-d5 c7-c6?

A weak move. Better was 20. ... ♕×d5; 21. ♗×d5, a5!



21. ♕d5-e6! ♗d7-f8

22. ♕e6-g4 a6-a5

23. ♗a1-c1 ♗f8-g6

24. ♕g4-h5?

A meaningless move. Stronger are 24. ♕f5, 24. ♗c2, or 24. g3.

24. ... ♗a8-c8

Maybe Karpov should have chosen 24. ... ♗h4; 25. ♗×h4, ♕×h4.

25. ♕h5-g4 ♗c8-b8

26. ♗b3-c2 ♗e7-c7

27. ♗c2-f5 ♗g6-e7

28. ♗f5-d3?!

28 ♗h5 seems stronger, with the idea 28. ... g6 29. ♗h6, ♕c8 30 ♕g5, ♗f5?; 31. ♕×f5, ♕×f5; 32. ♗×c6!, ♗×c6; 33. ♗e8+ and mate. Even after 28. ... ♗d5; 29. ♕f5, ♗g8; 30. ♕g5, g6; 31. ♕×f6, ♗×f6; 32. ♗h4, ♗g7; 33. ♕d3 White keeps an edge.

28. ... ♗e7-d5

29. ♕e3-d2 c6-c5

30. ♕g4-e6 ♗d5-b6

31. d4×c5 d6×c5!

Now finally Black position is unblocked.

32. ♗d3×d8+ ♗b8×d8

33. ♕d2-f4 ♗c7-e7

34. ♗f3-g5 ♗b6-d5

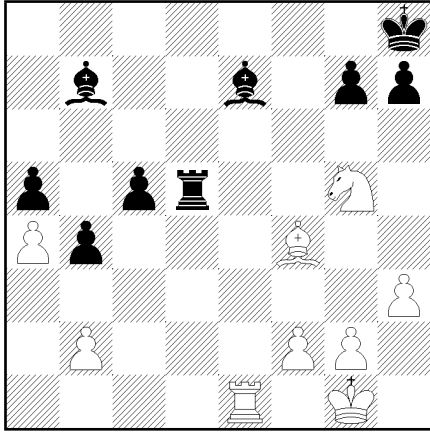
35. ♕e6×d5!

Forced. The ending is inferior after 35. ♗×c5, ♗de8!

35. ... ♗d8×d5

36. ♗e1×e7 ♕f6×e7

37. ♗c1-e1



Kasparov offers a draw, and Karpov accepted, because he had only two minutes left. With more time he could discover 37. ... ♕f8! 38. ♖e8, ♔g8! with a fine position.

The two players leave New York and transfer to Lion on even terms: one victory each. Kasparov left New York with a bad mood: he did not participate to the final press conference, that was instead attended by Karpov.

### 13 Game 13: Lion, Nov 24, 1990

KARPOV-KASPAROV  
GRUENFELD

- |    |        |        |
|----|--------|--------|
| 1. | d2-d4  | ♘g8-f6 |
| 2. | c2-c4  | g7-g6  |
| 3. | ♖b1-c3 | d7-d5  |
| 4. | c4xd5  | ♘f6xd5 |
| 5. | e2-e4  | ♘d5xc3 |
| 6. | b2xc3  | ♘f8-g7 |
| 7. | ♘c1-e3 | c7-c5  |
| 8. | ♚d1-d2 | 0-0    |

So far on two minutes each. In game 9 Kasparov played . . . , cxd4; 9.cxd4, ♘c6; 10. ♖d1, ♚a5+ and White had a small vantage.

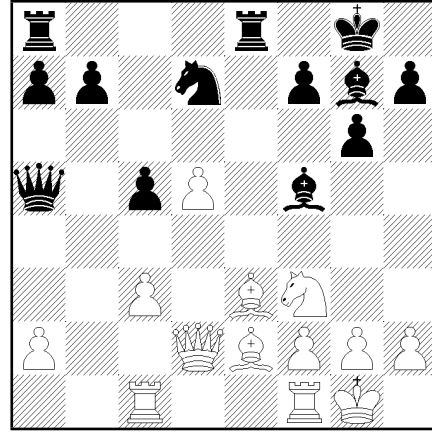
- |     |        |        |
|-----|--------|--------|
| 9.  | ♖a1-c1 | ♚d8-a5 |
| 10. | ♘g1-f3 | e7-e6  |

Tisdall says: "I've seen this before". But nobody can find a game with it.

- |     |        |        |
|-----|--------|--------|
| 11. | d4-d5  | e6xd5  |
| 12. | e4xd5  | ♖f8-e8 |
| 13. | ♘f1-e2 | ♘c8-f5 |
| 14. | 0-0    |        |

The game hasn't found it's own personality yet.

- |     |     |        |
|-----|-----|--------|
| 14. | ... | ♘b8-d7 |
|-----|-----|--------|



Interesting is now: 15. ♘h4 ♘e4; 16. f3 ♘xd5!; 17. ♚xd5 ♖xe3; 18. ♚xd7 ♖xe2 with a big Black plus. In Piket-Korchnoi, Wijk aan Zee 1990, White played 15. ♚b2. Mephisto thinks Black is better!

- |     |       |        |
|-----|-------|--------|
| 15. | h2-h3 | ♘d7-b6 |
|-----|-------|--------|

GM Lein thinks White is in deep trouble. GK might play Nb6-a4. Another of GK's ideas might be Qa5-a4.

- |     |       |  |
|-----|-------|--|
| 16. | g2-g4 |  |
|-----|-------|--|

The idea is 16. ... , ♘e4; 17. c4, ♚xd2; 18. ♘xd2 with 19. ♘xe4 and ♘d3 to come. After 16. ... , ♘e4 also 17. ♘g5 is interesting. After a slow start suddenly the game is very exciting. The Russians GMs in the pressroom found: 16. ... , ♘e4; 17. c4, ♚a3! with a Black edge.

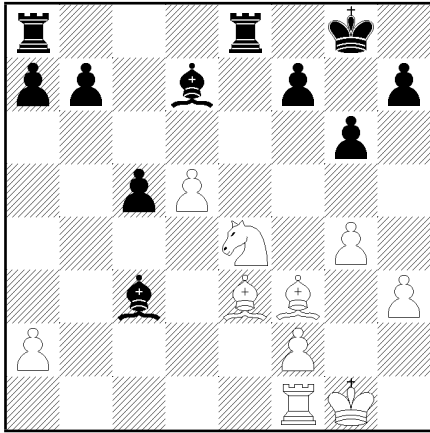
- |     |     |        |
|-----|-----|--------|
| 16. | ... | ♘f5-d7 |
|-----|-----|--------|

GM-elects Watson and Gallagher say Karpov is still under pressure, but improving. Mephisto 'think' its slightly better for Black. And the Russians say that Kasparov should have played h5, not ♘b6.

- |     |        |        |
|-----|--------|--------|
| 17. | c2-c4  | ♚a5xd2 |
| 18. | ♘f3xd2 | ♘b6-a4 |
| 19. | ♘e2-f3 | ♘a4xc3 |
| 20. | ♖c1xc3 |        |

Not 20. ♘xc5 ♘xa2 21. ♖b1 b6 22. ♘e3 ♘c3 with good play for Black.

- |     |        |        |
|-----|--------|--------|
| 20. | ...    | ♘g7xc3 |
| 21. | ♘d2-e4 |        |



21. ... ♖e8×e4  
 This is virtually forced, because 21. ... ♗e5;  
 22. ♗×c5, ♗c8; 23. ♗d3 and then c5 gives  
 White too much freedom.  
 22. ♗f3×e4 ♖a8-e8  
 23. ♗e4-d3 b7-b6  
 24. ♖g1-g2

Tisdall: "The first one who can bring himself to offer a draw will get it". Where did Kasparov drop his advantage? Maybe ♗c3 should have been prepared.

If Karpov plays ♗c1 to press f2-f4 (hoping for an endgame. advantage with f4-f5) GK might play ♖e1 to enter a drawn double-bishop ending.

24. ... f7-f5  
 25. g4×f5 ♗d7×f5  
 26. ♗d3×f5 g6×f5

Karpov sits thinking alone at the board. Black ♗c3 is potentially weaker than Be3, but White pawn on c4 is GK's major target. White d-pawn looks strong (and it is) but right now its quiet. impotent. If advanced it'll just be lost, since ♖g8 is to close.

27. ♖f1-d1 ♖g8-f7

No good for Black is 27. ... ♖e4; 28. ♗g5. Karpov must be considering lines like: 28.d6, ♖e6; 29. ♗f4, ♖d7 and Black is better. Time: White: 2:07 Black: 1:28.

28. ♖d1-d3 ♗c3-f6  
 29. ♖d3-a3 a7-a5  
 30. ♖a3-b3

Time: White: 2:12 Black: 1:31. It might look simple, but in fact the game is balanced on an edge. Which is most important: Black weakness on b6 or White c4?

30. ... ♗f6-d8

People in the pressroom seemed to be losing interest a bit. The Russians think GK is slightly better, the Americans think AK is slightly better and it might be a draw.

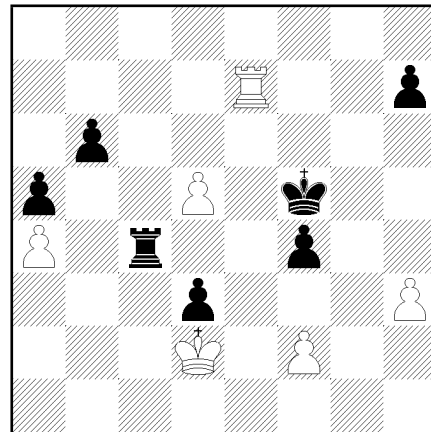
31. ♖b3-c3

If Karpov could get his king to d3, he might play on forever. But this is not the case. For instance, 31. ♖f3, ♖e4; 32. ♖c3, ♗f6. On 31. f3 follows 31. ... f4! and the Black rook goes behind White lines.

31. ... ♗d8-c7

A line in Karpov's favour is: 32. ♖f3, ♖e4; 33. ♖e2, f4; 34. ♖d3 and ♖e4 has to move.

32. a2-a4 ♖f7-f6  
 33. ♖g2-f1 f5-f4  
 34. ♗e3-c1 ♖f6-f5  
 35. ♖c3-c2 ♖e8-g8  
 36. ♖c2-e2 ♗c7-e5  
 37. ♗c1-b2 ♗e5-d4  
 38. ♗b2×d4 c5×d4  
 39. ♖e2-e7 d4-d3  
 40. ♖f1-e1 ♖g8-c8  
 41. ♖e1-d2 ♖c8-c4



Karpov seals his move. Now the analysis goes: 42. ♖×d3, ♖×a4; 43. d6, ♖a3+; 44. ♖c4, ♖a1; 45. ♖d5, ♖d1+; 45. ♖c6, a4 and White might be the one who in trouble.

Karpov sealed 42. ♖×d3, but a draw was agreed upon before adjournment has resumed. Draw

## 14 Game 14: Lion, Nov 26, 1990

KASPAROV-KARPOV  
 SCOTCH GAME (C45)

1. e2-e4 e7-e5

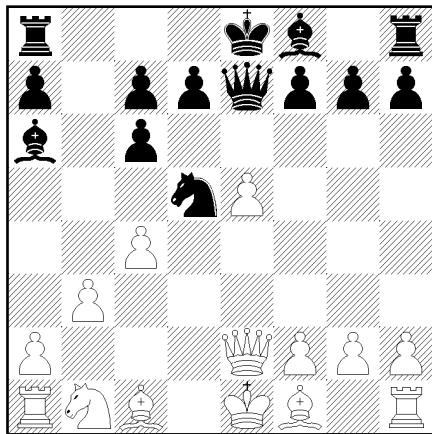
2.            ♖g1-f3            ♜b8-c6  
3.            d2-d4

“What?!” everybody cried out in the press-room. The Scotch Opening is a rare bird in World Championship matches. Generally it is regarded as to drawish. The two previous times the Scotch Opening was played in a World Championship match were in 1886 and 1892! It was in Steinitz-Zukertort and Chigorin-Steinitz. Anyway, this is the first time Kasparov has played this opening in an official game.

3.            ...            e5xd4  
4.            ♜f3xd4            ♞g8-f6  
5.            ♜d4xc6            b7xc6  
6.            e4-e5            ♞d8-e7  
7.            ♞d1-e2            ♞f6-d5  
8.            c2-c4            ♞c8-a6

Karpov has played twice this line against Timman. Timman played 9. ♞e4. At London 1984 Karpov played 9. ..., ♜b6, and then won. At Amsterdam 1985 he played 9. ..., ♜f6, and the game was eventually drawn.

9.            b2-b3



The books say: 9. ..., 000 but GM-elect Gallagher suggested 9. ..., ♞h4!; 10. ♞c2, ♜b4 where 11. ♞e2 might be White's best. A Mephisto computer gave Karpov a half pawn up if he played 9. ..., ♞h4. A game Ljubojevic - Seirawan went 9. ..., 000; 10. ♞b2, ♜b6 11. ♞e2. Black won in 39 moves. But in Hort - Unzicker 1983 white won in only 23 moves after 9. ..., 000; 10. ♞b2.

9.            ...            0-0-0  
10.            g2-g3

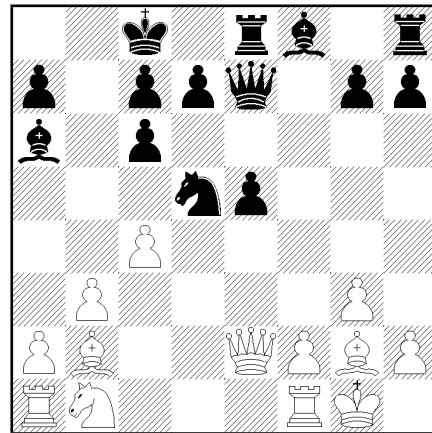
Maybe a novelty. ♞b2 and ♞b2 have been tried before.

10.            ...            ♞d8-e8  
11.            ♞c1-b2            f7-f6

12.            ♞f1-g2

Obviously 12. ..., fxe5 wins a pawn for Black but what about his ♞a6 and ♞f8?

12.            ...            f6xe5  
13.            0-0



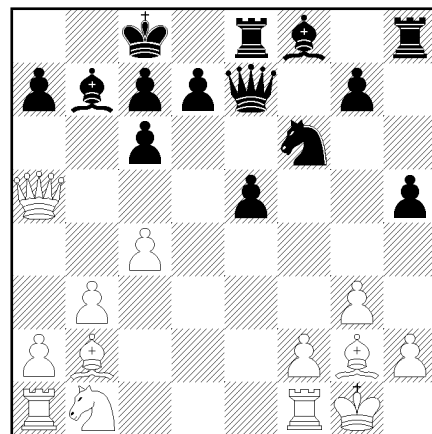
Karpov is a pawn up, but he'll find it difficult to get ♞a6, ♞f8, and ♞h8 into play. He must play for a King side attack to avoid disaster in the Queenside.

13.            ...            h7-h5  
Probably planning for g5 and ♞g7.

14.            ♞e2-d2            ♜d5-f6

Mephisto 'thinks' Black is a third of a pawn up.

15.            ♞d2-a5            ♞a6-b7



16.            ♞b2-a3

Already a critical moment in the game. 16. ♞xa7, ♞c5! could be very good for Black. Now 16. ..., ♞f7 and 16. ..., c5 are the moves everybody is discussing. As for 16. ..., ♞f7; 17. ♞xa7 Black will be obliged to squeeze something from his kingside attack not to end up



with an unpleasant endgame. And for: 16. ..., c5; 17. ♖×a7, e4.

- |     |        |        |
|-----|--------|--------|
| 16. | ...    | ♗e7-e6 |
| 17. | ♔a3×f8 | ♖h8×f8 |
| 18. | ♗a5×a7 |        |

Blacks has some problems. E.g.: 18. ..., e4; 19.a4, e3; 20.a5, e×f2+; 21.♔h1 and what can Karpov do about 22.a6!? Nothing! Lines like that make Karpov head for time-trouble.

- |     |     |         |
|-----|-----|---------|
| 18. | ... | ♗e6-g4! |
|-----|-----|---------|

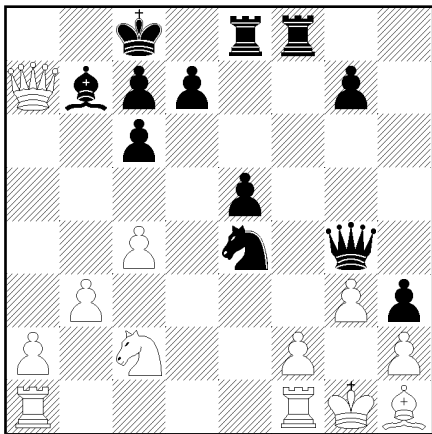
Karpov's idea is to play Qd4 to exchange Kasparov's ♗a7. This takes care of the advance of White a-pawn. Time: White: 0:33 Black: 1:42.

Valvo's idea 19.♘a3 seems strong. On 19. ..., ♗d4; 20.c5 to go ♘a3-c4-a5 looks strong.

- |     |        |  |
|-----|--------|--|
| 19. | ♘b1-a3 |  |
|-----|--------|--|

After 53 minutes Kasparov finally moved. Valvo doesn't think ♘a3 was an 53-minutes move.

- |     |        |        |
|-----|--------|--------|
| 19. | ...    | h5-h4  |
| 20. | ♘a3-c2 | h4-h3  |
| 21. | ♔g2-h1 | ♘f6-e4 |



The idea is 22. f3?, ♘×g3; 23.f×g4, ♘e2 mate! Also 22.f3, ♘×g3; 23.♖f2, ♗g6; 24.h×g3, ♗×g3; 25.♔f1, c5! is good for Black, as well as 22.♘e3, ♘c3!; 23.♗×b7+, ♔×b7; 24. ♔×c6+, ♔×c6; 25.♘×g4.

- |     |       |  |
|-----|-------|--|
| 22. | a2-a4 |  |
|-----|-------|--|

What on 22. ..., ♘d2!? Henley saw: 23.♘e3, ♘f3+; 24.♔×f3, ♗×f3; 25.c5 with a4-a5-a6 to come. GM-elect Gallagher is punching his way through to Kasparov's king with 23. ..., ♖f3 and a multiple sac on g3. But it doesn't really work.

- |     |        |         |
|-----|--------|---------|
| 22. | ...    | ♘e4-c3  |
| 23. | ♖a1-e1 | ♘c3-e2+ |
| 24. | ♖e1×e2 | ♗g4×e2  |

- |     |        |       |
|-----|--------|-------|
| 25. | ♘c2-b4 | d7-d5 |
|-----|--------|-------|
- White threatened 26.♘a6, ♔×a6; 27.♗a8 mate.

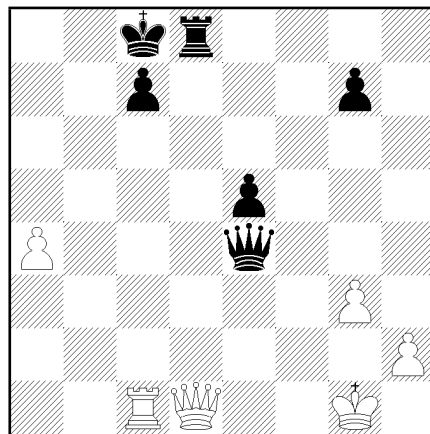
- |     |        |        |
|-----|--------|--------|
| 26. | c4×d5  | c6×d5  |
| 27. | ♔h1×d5 | ♔b7×d5 |
| 28. | ♘b4×d5 | ♗e2-c2 |
| 29. | ♗a7-a6 | ♔c8-d7 |

Not 29. ..., ♔b8?; 30.♘b4 entering in a mating net.

- |     |        |        |
|-----|--------|--------|
| 30. | ♘d5-e3 | ♗c2-e4 |
| 31. | ♖f1-c1 | ♖e8-b8 |
| 32. | ♗a6-f1 | ♖b8×b3 |
| 33. | ♗f1×h3 | ♔d7-d8 |

Both a few minutes left- and 6 moves. People are shouting in Lyon.

- |     |        |        |
|-----|--------|--------|
| 34. | ♗h3-h5 | ♔d8-c8 |
| 35. | ♗h5-d1 | ♖b3×e3 |
| 36. | f2×e3  | ♗e4×e3 |
| 37. | ♔g1-h1 | ♗e3-e4 |
| 38. | ♔h1-g1 | ♗e4-e3 |
| 39. | ♔g1-h1 | ♗e3-e4 |
| 40. | ♔h1-g1 | ♖f8-d8 |



The sealed move was 41.♗c2, but a draw was agreed.

Draw

## 15 Game 15: Lion, Nov 28, 1990.

KARPOV-KASPAROV  
GRUNFELD DEFENSE (D85)

- |    |        |        |
|----|--------|--------|
| 1. | d2-d4  | ♘g8-f6 |
| 2. | c2-c4  | g7-g6  |
| 3. | ♘b1-c3 | d7-d5  |
| 4. | c4×d5  | ♘f6×d5 |
| 5. | e2-e4  | ♘d5×c3 |
| 6. | b2×c3  | ♔f8-g7 |

7. ♖c1-e3 c7-c5  
 8. ♜d1-d2 0-0

Now Karpov stopped and took a deep think. IM Valvo said: "Karpov has a terrific sense of danger". Maybe he suspected an improvement on the 13th game.

9. ♘g1-f3

Game 13 saw 9. ♜c1 with a small edge for White.

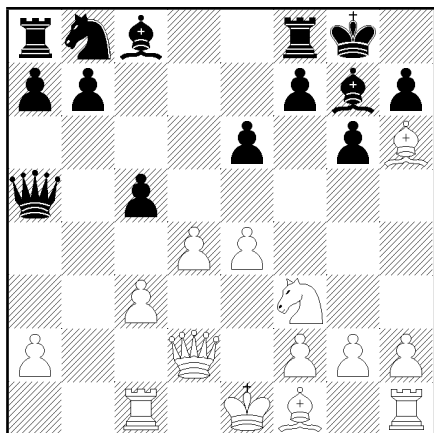
9. ... ♜d8-a5  
 10. ♜a1-c1

IM Tisdall observed "This is the old mainline. Just swap queens and go to sleep!"

10. ... e7-e6

And now the game is back on the tracks laid out by the 13th game.

11. ♖e3-h6



New move and certainly better than 11.d5 which Karpov tried in game 13. Karpov played ♖h6 immediately which indicated that he actually wanted to repeat the line, but just bluffed by spending 11 minutes on an unimportant transposition.

Watson thinks that White is a lot better after, say 11. ... , c×d4; 12. ♖×g7, ♜×g7; 13. c×d4, ♜×d2+; 14. ♜×d2, ♘c6; 15. ♜e3. Very likely the kind of position AK is hoping for. Like nobody else he's capable of squeezing something substantial from such simple. middle/endgames.

At the most qualified analyzing table the line discussed was 11. ... , ♜d8; 12. ♖×g7, ♜×g7. Some romantics want then to try 13. h4, but GM Gallagher said: 'It the most boring move in the position!' The reason is the line: 11. ... , ♜d8; 12. ♖×g7, ♜×g7; 13. h4, c×d4; (forced) 14. c×d4, ♜×d2+; 15. ♜×d2

and White is slightly better, but Black should be able to draw.

11. ... ♗b8-c6

After a full 41 minutes did GK come up with a move. 11. ♖h6 was suggested by Boris Spassky during the 13th game. The main question now is whether Kasparov will accept the slightly inferior middle game after exchanges on d4 and d2, or if he'll risk not doing so. Time: AK: 0:28 GK: 0:45.

12. h2-h4

After 11 minutes, and practically forcing the Queens' exchange: White threatens a King's side attack.

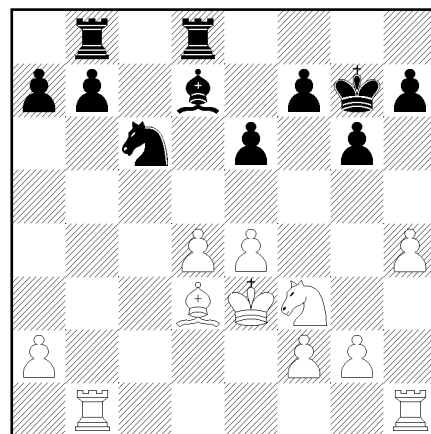
12. ... c5×d4  
 13. ♖h6×g7 ♜g8×g7  
 14. ♖c3×d4

"Maybe Kasparov is going to sweat a bit today" remarked IM Martin. True, the position after ♜×d2 certainly is not much fun for Black, though it might be quite drawish after correct play.

14. ... ♜a5×d2  
 15. ♜e1×d2 ♜f8-d8  
 16. ♜d2-e3 ♖c8-d7

Some experts now toy with 17.h5. Karpov is working on how to stop Black's standard equalizing manoeuvre: ♜ac8 + ♘(somewhere) + ♜×♜ and ♜c8. And in the pressroom people try to bring some kind of drama into the game by pushing h4-h5-h6 in various ways. If done, though, the pawn might just become a 'weaky'.

17. ♜c1-b1 ♜a8-b8  
 17. ... , b6 is weaker, because of 18. ♖a6.  
 18. ♖f1-d3



A classical position in the Grunfeld-Indian. And not one which makes the chessminds of the

pressroom all too excited. It is actually interesting, but mostly to experts. Generally the opinion is that this kind of dry position favours Karpov.

18. ... ♖c6-e7

Decreasing Black control in the center in this way leaves Karpov with many attractive possibilities. The straightforward ♖hc1 will force further exchanges, but 19. ♗e5, ♕e8; 20. h5!? opens for lines such as 20. ... f6; 21. h6+ ♖g8 22. ♗g4 ♖f7 23. ♕c4. As for 19. ♗e5 f6! and 20. ♗×d7 ♖×d7 Kasparov will (if anything) be better by pumping up pressure on d4 with ♖bd8 and ♗c6.

Mike Valvo is trying to find something for Karpov after a rush with his kingside pawns. See g2-g4 and h4-h5 or g4-g5. In any case Black should put his bishop on c6 press against d4 with ♖d6 and (let's say) toy with a f7-f5. Might become very interesting still. Or might be an early draw because of their mutual lack of time.

19. h4-h5 f7-f6  
20. h5×g6 h7×g6  
21. ♖h1-h2

This obviously is a critical moment in a not very dramatical game. In the commentators room Spassky joked that White best 20th move would have been 20.h5-h4!

Maybe Karpov's ♖h2 deserves an "!". Kasparov's ♕c6 doesn't work. E.g.: 21. ... ♕c6; 22. ♕c4, ♕d7.

21. ... b7-b6

Now this is necessary.

22. g2-g4

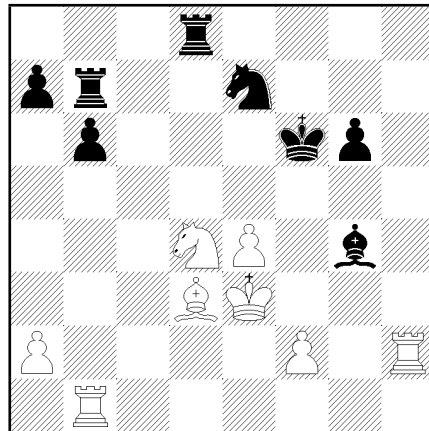
The threat is g5, undermining e5.

22. ... e6-e5!

So Kasparov did accept Karpov's invitation.

23. d4×e5 ♕d7×g4  
24. e5×f6+ ♖g7×f6  
25. ♗f3-d4 ♖b8-b7?

Better was 25. ... ♖h8.



26. f2-f3?

Mephisto found a nice combination here. Karpov missed 26. ♖h4!, ♖bd7 (or 26. ... ♕d7; 27. ♖h7 with the threat of e5+; if 26. ... ♖g5; 27. ♖×g4+!, ♖×g4; 28. ♖g1+ will do the trick; on 26. ... ♕h5; 27. ♖f4+ wins) 27. e5+!, ♖×e5; 28. ♖b5+, ♗d5+; 29. ♖×d5+, ♖×d5 (or 29. ... ♖×d5; 30. ♗c6+ nets a piece). 30. ♖×g4.

26. ... ♖b7-d7  
27. ♖b1-b4

The chess-computer Mephisto claims that White is 3/4 of a pawn ahead. Wonder if Deep Thought would disagree? Time: White: 2:11 Black: 2:17.

27. ... ♕g4-e6

Fireworks: 28.f4, a5!?!; 29.e5+, ♖f7; 30. ♖h7+, ♖g8; 31. ♖g7+!?, ♖h8 and God only knows what is going on. Lines like that are blowing over the tables in the pressroom right now.

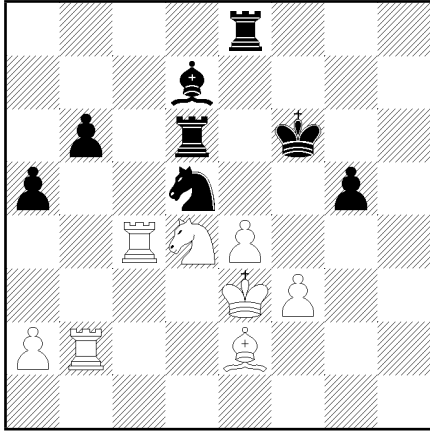
28. ♖h2-c2 a7-a5  
29. ♖b4-a4 g6-g5  
30. ♕d3-b5 ♖d7-d6

Now most people seem to think that Karpov has overdone it with his slow positional play. Time: AK: 2:20 GK: 2:20.

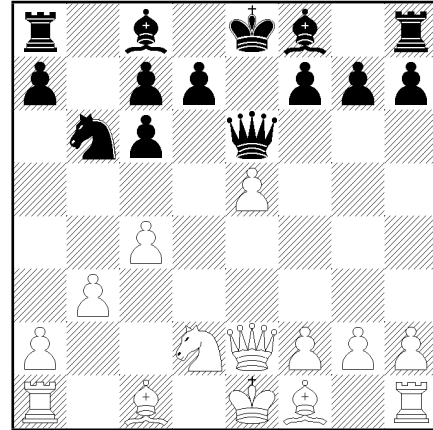
31. ♕b5-e2 ♕e6-d7  
32. ♖a4-c4 ♖d8-e8

Time: AK: 2:25 GK: 2:22. Little is left of Karpov's advantage.

33. ♖c2-b2 ♗e7-d5+



Draw.



Just half an hour and ten moves has passed and already K and K are in a totally un-tested landscape. IM Martin, the new bulletin. writer, says that 10. ... , ♔e7 should be expected now.

10. ... a7-a5

A novelty! Karpov only took six minutes only: it was prepared beforehand.

“An unusual and interesting position” says William Watson. Kasparov is in a kind of dilemma. If he allows AK’s a5-a4, then he’ll be running the risk that a lot of pieces will be exchanged. But to stop it will (with a2-a3) will soften up his squares b3 and c4 a lot.

11. ♕c1-b2 ♕f8-b4

Watson thinks that White might be able to hold on to something quite substantial in the current. position. Even after an exchange of Queens.

12. a2-a3

The pressroom was divided on what’s going on in this position.

12. ... ♕b4×d2

Spassky thinks that Black equalizes by: 13. ♖×d2, a4; 14.c5, ♘d5; 15.b4, f5!

13. ♖e2×d2

Now on 13. ... , a4; 14.b4 runs into 14. ... , ♘×c4. An alternative line seems to be: 14.c5, ♘d5; 15.b4, ♕a6 and Karpov’s strong ♘d5 ought to make up for his lack of space.

13. ... d7-d5

Time: GK: 0:36 AK: 0:54.

Rochal said “Karpov is playing for a win”. But the opening clearly favors White: he has the two Bishops and a forthcoming King side attack.

14. c4×d5 c6×d5

15. ♖a1-c1

## 16 Game 16: Lion, Dec 4, 1990

KASPAROV-KARPOV

SCOTCH GAME C45

1. e2-e4 e7-e5  
2. ♘g1-f3 ♘b8-c6  
3. d2-d4 e5×d4

Kasparov is doing it again! Scotch Opening as in the already memorable 14th game.

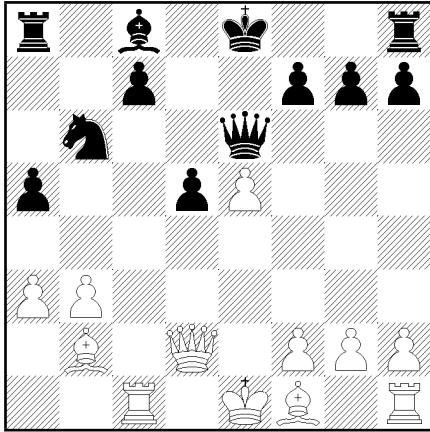
4. ♘f3×d4 ♘g8-f6  
5. ♘d4×c6 b7×c6  
6. e4-e5 ♖d8-e7  
7. ♖d1-e2 ♘f6-d5  
8. c2-c4 ♘d5-b6

The 14th game saw 8. ... , ♕a6. This is less common.

9. ♘b1-d2

Only one correspondence game is known with 9. ♘d2: Seeliger - Palciauskas,1978, which continued: 9. ... , ♖e6.

9. ... ♖e7-e6  
10. b2-b3



Spassky said that White will be slightly better after 15. ♖c1. White already has some good assets. Such as the c-line and a beginning superiority on the black squares. The general feeling is that AK should have played a5-a4 when he had the chance.

15. ... 0-0  
 16. ♖c1×c7

In the commentator-room Spassky and French IM Shariff are analyzing things like 16. ..., f6; 17. ♕e2, f×e5; 18. ♖g5 with good winning chances for Kasparov. Something seems to have gone totally wrong for Karpov.

16. ... ♖e6-g6  
 Time now: GK: 0:57 AK: 1:34  
 17. f2-f3 ♕c8-f5  
 18. g2-g4 ♕f5-b1

Karpov took his time to find ♖g6, but has since then played quickly. On the other hand Kasparov has slowed down dramatically. Time: GK: 1:20 AK: 1:36 His lead on the clock is not gone yet, but little of it is left. The common opinion is that Karpov is getting desperate. But Kasparov's position is becoming very exposed. After an exchange of rooks in the c-file, Karpov might take advantage of his control of the square c2. GM Lein thinks that it looks very dangerous for Kasparov. Maybe the whole evaluation of AK's d7-d5 has to be change!/? Maybe it was a stong pawn-sacrifice and attacking move.

19. ♕f1-b5

A move that costs Kasparov half an hour. If now 19. ..., ♖ac8

White has a strong reply in 20. ♖c3! blocking the c-file and winning time to castle and to exchange the white-squared bishop with ♕b5-d3. A plan that should lead directly to won endgames for White.

19. ... ♖a8-c8  
 20. ♖c7×c8 ♖f8×c8  
 21. 0-0

Now on 21. ..., ♖c2 White has 22. ♖d4!

21. ... h7-h5

A good move and Karpov's only chance. Most logical seems now 22.h3 h×g4 23.h×g4 ♖c2 24. ♖d4 ♖h6 25. ♖f2. A good position for White. But I all similar situations in the match Karpov has seemed capable of pulling some brilliant defensive moves out of his position.

22. h2-h3 h5×g4  
 23. h3×g4 ♕b1-c2

Tisdall says: "Now I understand what Karpov is doing. His ♖b6 is clinically dead but now he threatens to make it into a piece".

24. ♖d2-d4

With the idea 24. ..., ♕×b3? 25.e6 and if the ♖b6 moves 26.e7.

24. ... ♖g6-e6  
 25. ♖f1-f2

Time: GK: 1:56 AK: 2:08 Seems that Kasparov wants to win by direct attack. E.g. 25. ..., ♕×b3 26. ♕d3! intending ♕f5.

25. ... ♖c8-c7

Frederick Friedel (one of the creators of Chess-Base) says: "I have never seen Garry a pawn up before!"

26. ♖f2-h2

Time: GK: 2:05 AK: 2:09. Tisdall thinks that the game might get a 'gruesome' finish: Kasparov's attack should break through.

26. ... ♖b6-d7

IM W.Watson says: "Black is much worse, but your can never write off the greatest defender in chess."

27. b3-b4 a5×b4  
 28. a3×b4 ♖d7-f8  
 29. ♕b5-f1 ♕c2-b3

Time: GK: 2:16 AK: 2:18.

30. ♕f1-d3 ♕b3-c4  
 31. ♕d3-f5 ♖e6-e7  
 32. ♖d4-d2 ♖c7-c6

Time: GK: 2:19 AK: 2:24. If 32. ..., ♖e6?? 33. ♖h8+! mating.

33. ♕b2-d4 ♖c6-a6  
 34. ♕f5-b1 ♖a6-a3  
 35. ♖h2-h3

It defends the f3 pawn and threatens ♖f2.

Time: GK: 2:25 AK: 2:28

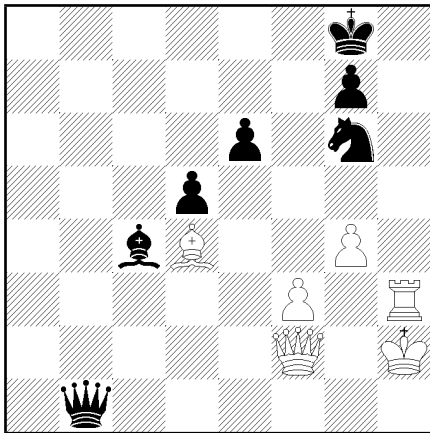
35. ... ♖a3-b3  
 36. ♕b1-c2 ♖e7×b4  
 37. ♖d2-f2 ♖f8-g6  
 38. e5-e6

Interesting is also 38. ♖×b3 ♗×b3 39. ♖h1 intending 40. ♖h2.

38. ... ♖b3-b1+?

A mistake that results in a very long ending. More consistent was 39. ♖h2 ♖f1 40. e×f7+ ♖×f7 41. ♖×g6+ ♖×g6 42. ♗c2.

39. ♖c2×b1 ♗b4×b1+  
40. ♖g1-h2 f7×e6



The time-scramble wasn't really dramatic. Experts agreed that Black is closer to a draw than White is to winning. White sealed the following move.

41. ♗f2-b2

A long night of analysis led to the common evaluation that GK still had some chances to win.

41. ... ♗b1×b2  
42. ♖d4×b2 ♗g6-f4  
43. ♖h3-h4 ♗f4-d3  
44. ♖b2-c3 e6-e5  
45. ♖h2-g3 d5-d4  
46. ♖c3-d2

Black goal for holding a draw is clear: exchange e5 for f3, nail down the d-pawn on d3 and block the White g-pawn.

46. ... ♖c4-d5  
47. ♖h4-h5 ♖g8-f7  
48. ♖d2-a5

GK took only 3 minutes on this move compared to AK's 18 minutes on ♖f7.

48. ... ♖f7-e6  
49. ♖h5-h8

Time: GK: 2:57 AK: 3:08; before 3:30 the 56th move must be made. Kasparov's rook is on its way to the a-file. Karpov's position looks difficult. Put White rook on a6, the Black King on f7 and a rush with the g4-pawn might bring Black in serious trouble.

49. ... ♗d3-b2

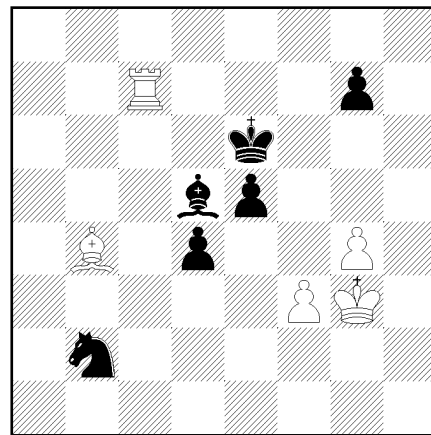
Time: GK: 3:00 AK: 3:11

50. ♖h8-e8+ ♖e6-d6

A brick in Karpov's defense is the line: 51. ♖b4+, ♖c6; 52. ♖×e5, ♗d3 winning a piece.

51. ♖a5-b4+ ♖d6-c6  
52. ♖e8-c8 ♖c6-d7  
53. ♖c8-c5 ♖d7-e6  
54. ♖c5-c7

The last three moves were played quickly. GM Dlugy thinks that it's all within the homework done by K+K and their seconds. Time: GK: 3:06 AK: 3:25 and running. Karpov still has to make three moves in four minutes.



54. ... g7-g6

And not the expected 54. ..., ♗c4, maybe because 55. f4! nearly creates a mating trap around the black King. Karpov's 54. ..., g6 was a major decision since an endgame with the pieces: R plus g4 pawn against B plus g7 pawn is a possibility. And with the pawn on g7 it's a draw, according to GM Dlugy, but it not so clear with the pawn on g6. Some tricks: 55. ♖e7+ ♖f6 56. ♖d7 ♖f7? 57. g5+ winning. And 56. ..., ♖e6 57. ♖b7 looks good for White.

55. ♖c7-e7 ♖e6-f6  
56. ♖e7-d7 ♖d5-a2

Spassky suggested ♖a2 just before it appeared on the board. IM Martin thinks it's lost for AK. Kasparov has some nasty threats but Black's d-pawn need just a little air to get going. Spassky gives 60% for a Kasparov win and 40% for a draw.

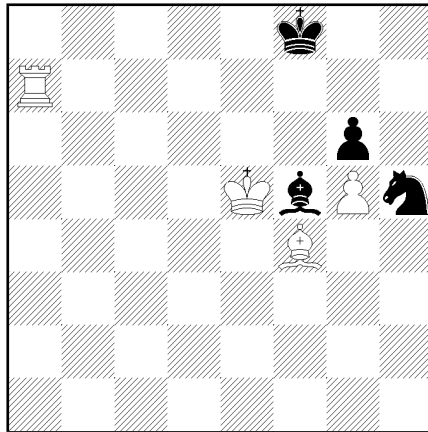
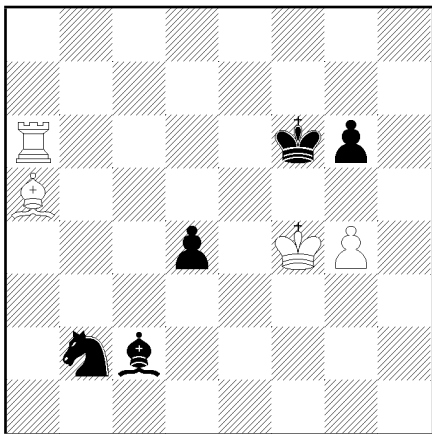
The pressroom indicates that Black is lost. The line in question is: 57. ♖a7 ♖any 58. ♖e7+ ♖e6 59. ♖g5 with the plan ♖a7-g7×g6 check.

57. ♖d7-a7

57.                   ...                   ♠a2-c4  
 58.           ♠b4-a5                   ♠c4-d3  
 59.                   f3-f4                   e5×f4

Not 59. ..., e4? 60. ♠b6! winning the pawn.

60.           ♙g3×f4                   ♠d3-c2  
 61.           ♚a7-a6+



The winning plan includes the following stages:

1. Penetrate with the King to d8;
2. push the Black King toward the corner with ♠d6;
3. close the net with ♙e8, ♚f7 and ♚f8.

The main problem with this long-range strategy is the 50-moves rule.

75.           ♠f4-h2                   ♘h5-g7  
 76.           ♠h2-g1                   ♘g7-h5  
 77.           ♠g1-c5+                   ♙f8-g8  
 78.           ♙e5-d6                   ♙g8-f8  
 79.           ♠c5-d4                   ♠f5-g4

Time: GK: 5:04 AK: 4:35

80.           ♠d4-e5                   ♠g4-f5  
 81.           ♚a7-h7                   ♙f8-g8  
 82.           ♚h7-c7                   ♙g8-f8

Rumours are now that Karpov's camp have had this structure on their analyzing board this morning. If true, then its not just a brilliant defensive performance by Karpov, it's also an one by his seconds.

83.           ♙d6-c6                   ♙f8-g8  
 84.           ♚c7-e7                   ♙g8-f8  
 85.           ♠e5-d6                   ♙f8-g8  
 86.           ♚e7-e8+                   ♙g8-f7  
 87.           ♚e8-e7+                   ♙f7-g8  
 88.           ♠d6-e5

GM Ron Henley confirmed that "We saw something like this" this afternoon. Now the game is 88 moves old, and at the 40th move Karpov's team looked at this kind of structure!

88.           ...                   ♙g8-f8

With move 88 they passed the 4th time-control in this long- distance game. GM Dlugy

"Finished!" somebody is saying in the press-room. "Really?!" doubts Tisdall.

61.           ...                   ♙f6-f7  
 62.           ♙f4-e5                   ♘b2-d3+  
 63.           ♙e5×d4                   ♘d3-f2  
 64.           g4-g5                   ♠c2-f5  
 65.           ♠a5-d2                   ♙f7-e7  
 66.           ♙d4-d5                   ♘f2-e4  
 67.           ♚a6-a7+                   ♙e7-e8  
 68.           ♠d2-e3                   ♘e4-c3+  
 69.           ♙d5-e5                   ♙e8-d8  
 70.           ♠e3-b6+                   ♙d8-e8  
 71.           ♚a7-c7

Time: GK: 4:21 AK: 4:22

71.           ...                   ♘c3-e4  
 72.           ♠b6-e3                   ♘e4-g3

The second time-control has been passed.

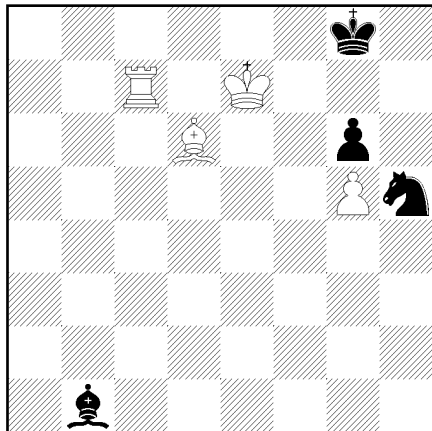
73.           ♠e3-f4                   ♘g3-h5

Watson says: "If this is a draw, then it will be ont of the greatest comebacks in the history of the game".

74.           ♚c7-a7                   ♙e8-f8

thinks that “Kasparov has improved since the beginning of the adjournment!” He suggested an interesting possibility for White. Put the white King on h6 and sac the rook on g6. The Black knight on h5 will end up being trapped.

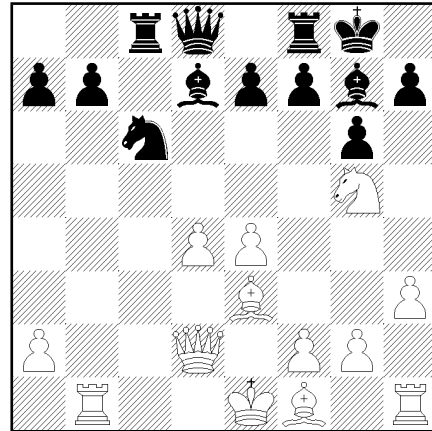
- |      |         |        |
|------|---------|--------|
| 89.  | ♖e7-a7  | ♘f5-g4 |
| 90.  | ♔c6-d6  | ♘g4-h3 |
| 91.  | ♖a7-a3  | ♘h3-g4 |
| 92.  | ♖a3-e3  | ♘g4-f5 |
| 93.  | ♔d6-c7  | ♔f8-f7 |
| 94.  | ♔c7-d8  | ♘f5-g4 |
| 95.  | ♘e5-b2  | ♘g4-e6 |
| 96.  | ♘b2-c3  | ♘e6-f5 |
| 97.  | ♖e3-e7+ | ♔f7-f8 |
| 98.  | ♘c3-e5  | ♘f5-d3 |
| 99.  | ♖e7-a7  | ♘d3-e4 |
| 100. | ♖a7-c7  | ♘e4-b1 |
| 101. | ♘e5-d6+ | ♔f8-g8 |
| 102. | ♔d8-e7  |        |



Karpov resigns. There is no defense against 103. ♖c8+ followed by 104. ♘e5 and mate.

In Game 15 Kasparov failed to equalize with 9. ... ♖a5.

- |     |        |        |
|-----|--------|--------|
| 10. | ♘f3-g5 | c5×d4  |
| 11. | c3×d4  | ♗b8-c6 |
| 12. | h2-h3  | ♘g4-d7 |
| 13. | ♖a1-b1 | ♖a8-c8 |



The pawn is poisoned: 14. ♖×b7, ♗×d4!; 15. ♘×d4, ♘×d4; 16. ♖×d4, ♖c1+; 17. ♔d2, ♖d1+; 18. ♔×d1, ♘a4+.

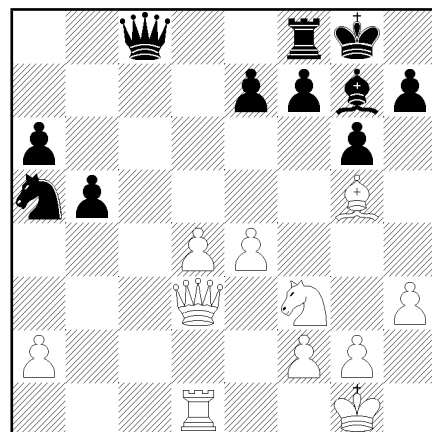
- |     |        |        |
|-----|--------|--------|
| 14. | ♗g5-f3 | ♗c6-a5 |
| 15. | ♘f1-d3 | ♘d7-e6 |
| 16. | 0-0    | ♘e6-c4 |
| 17. | ♖f1-d1 | b7-b5  |
| 18. | ♘e3-g5 | a7-a6  |

Black has no counterplay.

19. ♖b1-c1

Pressure on Black is increasing. Its knight is misplaced, and the two center White pawn are dangerous.

- |     |        |        |
|-----|--------|--------|
| 19. | ...    | ♘c4×d3 |
| 20. | ♖c1×c8 | ♖d8×c8 |
| 21. | ♖d2×d3 |        |



## 17 Game 17: Lion, Dec 2, 1990

KARPOV-KASPAROV  
GRUNFELD DEFENSE (D85)

- |    |        |        |
|----|--------|--------|
| 1. | d2-d4  | ♘g8-f6 |
| 2. | c2-c4  | g7-g6  |
| 3. | ♗b1-c3 | d7-d5  |
| 4. | c4×d5  | ♗f6×d5 |
| 5. | e2-e4  | ♗d5×c3 |
| 6. | b2×c3  | ♘f8-g7 |
| 7. | ♘c1-e3 | c7-c5  |
| 8. | ♖d1-d2 | 0-0    |
| 9. | ♗g1-f3 | ♘c8-g4 |



21. ... ♖f8-e8?  
 Now White occupies the c-file. Maybe it was better to look for exchanging the Queens aiming at activating the knight: 21. ... ♖b7; 22. ♖a3, ♗c4; 23. ♖×e7, ♖×e7; 24. ♕×e7, ♖×e8.

22. ♖d1-c1 ♖c8-b7  
 23. d4-d5 ♗a5-c4  
 24. ♗f3-d2 ♗c4×d2  
 25. ♕g5×d2 ♖e8-c8  
 26. ♖c1-c6 ♕g7-e5

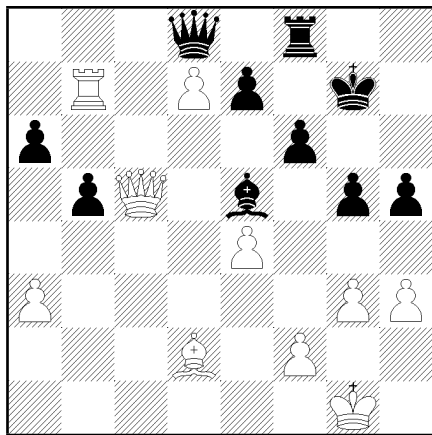
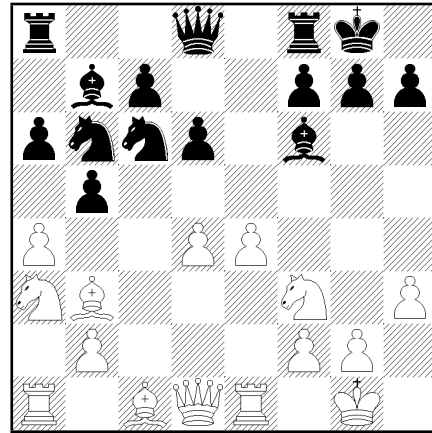
Black is mated after 26. ... ♖×c6?; 27. d×c6, ♖×c6; 28. ♖d8+, ♕f8; 29. ♕h6.

27. ♕d2-c3 ♕e5-b8  
 28. ♖d3-d4 f7-f6  
 29. ♕c3-a5 ♕b8-d6  
 30. ♖d4-c3 ♖c8-e8  
 31. a2-a3 ♗g8-g7

White victory is a matter of technique.

32. g2-g3 ♕d6-e5  
 33. ♖c3-c5 h7-h5  
 34. ♕a5-c7 ♕e5-a1  
 35. ♕c7-f4 ♖b7-d7  
 36. ♖c6-c7 ♖d7-d8  
 37. d5-d6 g6-g5  
 38. d6-d7 ♖e8-f8  
 39. ♕f4-d2 ♕a1-e5  
 40. ♖c7-b7

2. ♗g1-f3 ♗b8-c6  
 3. ♕f1-b5 a7-a6  
 4. ♕b5-a4 ♗g8-f6  
 5. 0-0 ♕f8-e7  
 6. ♖f1-e1 b7-b5  
 7. ♕a4-b3 d7-d6  
 8. c2-c3 0-0  
 9. h2-h3 ♗f6-d7  
 10. d2-d4 ♕e7-f6  
 11. a2-a4 ♕c8-b7  
 12. ♗b1-a3 e5×d4  
 13. c3×d4 ♗d7-b6



Kasparov resigns.

White wins easily with ♖c6 followed by ♕e3-b6.

## 18 Game 18: Lion, Dec 4, 1990

KASPAROV-KARPOV  
 RUYLOPEZ (C92)

1. e2-e4 e7-e5

In game 12 White came close to a win after 13. ... ♗a5.

14. ♕c1-f4 b5×a4  
 15. ♕b3×a4 ♗b6×a4  
 16. ♖d1×a4 a6-a5

Karpov played this instantly. The plan, to anchor his knight at b4, was a part of his preparation.

17. ♕f4-d2

Undoubtedly the result of Kasparov's effort when he took 46 minutes on his 14. ♕f4. But Karpov's fast reply indicates that this still wasn't new to him.

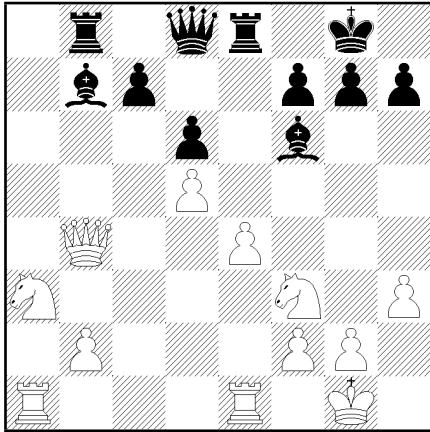
17. ... ♖f8-e8  
 18. d4-d5 ♗c6-b4

Almost forced. After 18. ... ♗e5; 19. ♗×e5, ♕×e5; 20. ♗c4 White has a very good position.

19. ♕d2×b4 a5×b4  
 20. ♖a4×b4 ♖a8-b8

Karpov plays just like Kasparov would! And still he takes no time doing so. Karpov's powerhouses on f6 and b8 should make up for it with ease. And the chessclock tells it's own story. Now Kasparov has used a full hour more than Karpov. No need to say who has psychological superiority today. As for the position: most

natural seems now 21. ♖d2 to be able to answer 21. ... ♙a6 with 22. ♖b1 and b2-b4-b5 etc.



21. ♖b4-c4!

But this is much better! On 21. ... ♙×b2; 22. ♖a2 looks strong, since 22. ... ♙f6 23. ♗b5 simultaneously puts pressure on c7 and prepares ♗b5-d4. GM Dorfman, GK's trainer for a decade, thinks that now 21. ... ♖c8 is o.k. for Black. Most of Karpov's confidence has disappeared after ♖c4. Is 21. ... ♖c8 good enough for Black? On 22. ♖b1 Dorfman suggested 22. ... c6! which will life back to Blacks ♙b7. And one might argue the other way round: If not 21. ... ♖c8, how then is ♙b7 supposed to get to a6?

Another move is 21. ... ♖d7 with the simple plan of pushing c7-c6; Blacks seems to keep the balance, despite being a pawn down.

Time: GK: 1:18 AK: 1:01.

After AK's astonishing blitz-start a tough fight has evolved. Karpov do have nice assets in his strong pair of bishops, but Kasparov has a pawn and a solid grab on some important white squares. Some fireworks shown by John Jordan (bulletin-editor and amateur-player): 21. ... ♖d7; 22. ♗b5, ♙×b2; 23. ♖b1, ♙×d5 looks possible for Karpov, but 24. e×d5, ♖×e1+; 25. ♖×e1, ♖×b5 opens up for 26. ♖c7! winning on the spot!

21. ... ♖d8-c8

After one hour and three minutes AK decided on this predictable move after all.

22. ♗f3-d4 ♙b7-a6  
 23. ♖c4-c3 c7-c5  
 24. d5×c6 ♙f6×d4  
 25. ♖c3×d4 ♖c8×c6  
 26. b2-b4

Spassky seems to think that Kasparov is simply a full pawn up.

26. ... h7-h6  
 27. ♖e1-e3 ♖e8-e6  
 28. f2-f3

GM Larsen says: "GK has a positional advantage and an extra pawn: he ought to be able to win."

28. ... ♖b8-c8  
 29. ♖e3-b3

IM Davies: "GK is winning". 29. ♖b3 prepares for 29. ... ♙b5 30. ♖d5. GM Watson says "This is a crucial game. If Kasparov wins (and Watson indeed thinks he will) then Karpov has to score 4 points from the last 6 games in the match".

29. ... ♙a6-b5  
 30. ♖b3-b2

Rochal turns his thumb down on Karpov's position. White threatens ♖c2.

30. ... ♖c6-b7  
 31. ♗a3-c2

Finally the knight can leave its lair.

31. ... ♖b7-e7  
 32. ♖d4-f2

Vacating the d4 square for his Knight, which then will have made a blitz-promotion.

32. ... ♖e6-g6

Putting out bait in troubled waters. Now 33. ♗d4 ♖e5 opens for the trick: 34. ♖a5? ♖c1+ and for the positional 34. ... ♖c4.

33. ♗c2-e3 ♖e7-e5  
 34. ♖b2-b1

That should kill all of Karpov's hopes for mating on the back rank.

34. ... ♙b5-d7  
 35. ♖a1-a5

IM Davies says: "It's completely lost for Karpov".

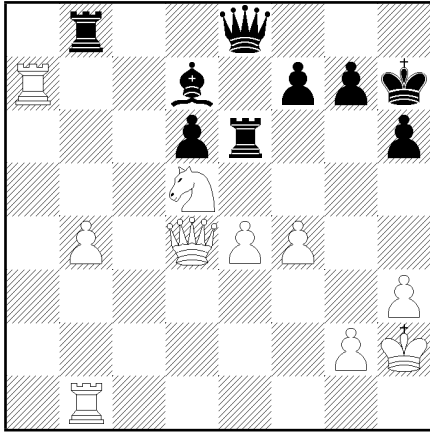
35. ... ♖e5-e7

Spassky: "Karpov should spank his seconds for this result of bad preparations on his hands".

36. ♖a5-a7 ♖e7-d8  
 37. ♗e3-d5

To meet 37. ... ♙×h3 with ♗e7+ and ♗×g6.

37. ... ♔g8-h7  
 38. ♔g1-h2 ♖c8-b8  
 39. f3-f4 ♖g6-e6  
 40. ♖f2-d4 ♖d8-e8



41. ♖c7 does not win immediately. The reason is: 41. ♖c7, ♜×e4; 42. ♜×d6, ♜e7; 43. ♜×e7, ♜×e7; 44. ♖d5, ♜f5. It should win, but it may be a bit unclear.

- |     |        |        |
|-----|--------|--------|
| 41. | ♜b1-e1 | ♜d7-c6 |
| 42. | ♜d4-d3 | ♜e8-f8 |
| 43. | ♜e1-c1 |        |

Kasparov moved instantly. Obviously he had everything worked out beforehand.

- |     |     |        |
|-----|-----|--------|
| 43. | ... | ♜c6×d5 |
|-----|-----|--------|

A sad decision, but it was this or allowing two White rooks to penetrate and take full control of the 7th rank.

- |     |        |        |
|-----|--------|--------|
| 44. | e4×d5+ | ♜e6-g6 |
| 45. | ♜d3-f5 |        |

Kasparov still moved instantly.

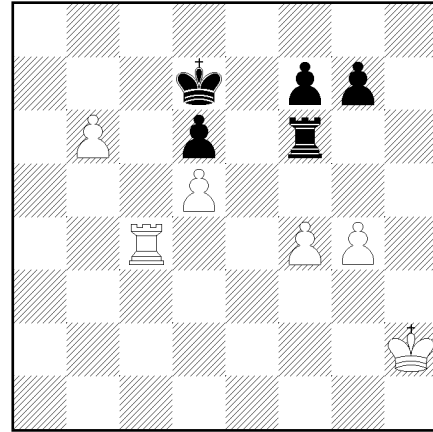
- |     |        |        |
|-----|--------|--------|
| 45. | ...    | ♜h7-g8 |
| 46. | ♜a7-c7 | ♜g6-f6 |
| 47. | ♜f5-d7 |        |

And now Karpov must resign, thought everybody. Isn't he just losing his Queen? No. Black is lost in this position, indeed, but Karpov wanted so see if Kasparov had done his homework well enough to pass the test.

- |     |         |        |
|-----|---------|--------|
| 47. | ...     | ♜b8-d8 |
| 48. | ♜d7×d8  | ♜f8×d8 |
| 49. | ♜c7-c8  | ♜d8-f8 |
| 50. | ♜c1-c4  | ♜f6-f5 |
| 51. | ♜c8×f8+ | ♜g8×f8 |
| 52. | ♜c4-d4  | h6-h5  |
| 53. | b4-b5   | ♜f8-e7 |
| 54. | b5-b6   | ♜e7-d7 |
| 55. | g2-g4   |        |

So Karpov's problem was that he couldn't stop the b-pawn.

- |     |        |        |
|-----|--------|--------|
| 55. | ...    | h5×g4  |
| 56. | h3×g4  | ♜f5-f6 |
| 57. | ♜d4-c4 |        |



Karpov resigned.

## 19 Game 19: Lion, Dec 12, 1990

KARPOV-KASPAROV

KING'S INDIAN (E94)

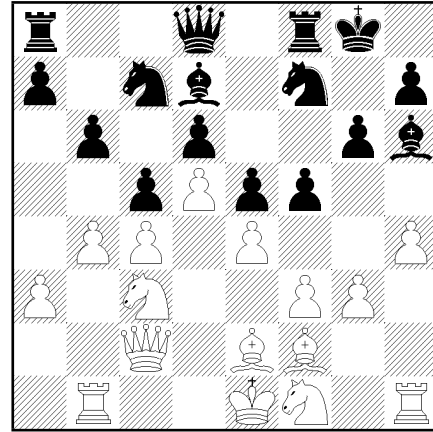
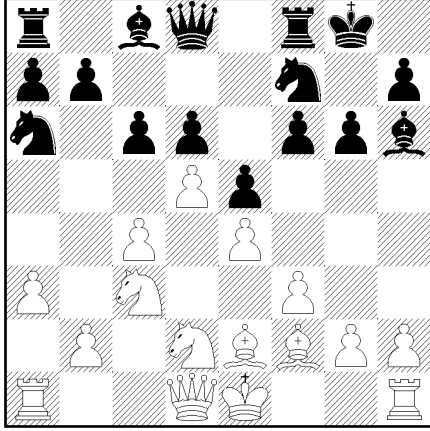
- |    |        |        |
|----|--------|--------|
| 1. | d2-d4  | ♜g8-f6 |
| 2. | c2-c4  | g7-g6  |
| 3. | ♞b1-c3 | ♜f8-g7 |
| 4. | e2-e4  | d7-d6  |
| 5. | ♞g1-f3 | 0-0    |
| 6. | ♜f1-e2 | e7-e5  |
| 7. | ♜c1-e3 | c7-c6  |
| 8. | d4-d5  | ♞f6-g4 |
| 9. | ♜e3-g5 | f7-f6  |

After 9. ..., ♜b6; 10. 00, ♜×b2; 11. ♞a4 the Black Queen is confined to a3.

- |     |        |        |
|-----|--------|--------|
| 10. | ♜g5-h4 | ♞b8-a6 |
| 11. | ♞f3-d2 | ♞g4-h6 |

This variant of the King's-Indian is very slow.

- |     |        |        |
|-----|--------|--------|
| 12. | a2-a3  | ♞h6-f7 |
| 13. | f2-f3  | ♜g7-h6 |
| 14. | ♜h4-f2 |        |



Seirawan: “This kind of position is much easier to play for White”.

14.                   ...                   f6–f5  
15.                   ♔d1–c2                   ♚c8–d7

Kasparov took 15 minutes on this move. The game seems quiet, but in this kind of position open war might suddenly break out all over the place.

16.                   b2–b4                   c6–c5  
17.                   ♖a1–b1

This type of position is thought to be just playable for Black, no more. And often he has to counter-attack on the kingside.

17.                   ...                   b7–b6  
18.                   ♞d2–f1

The game must open up someday and somehow, but where and when? Rumours in the press-room was that Karpov is a little better, but many seem to sense that Kasparov is trying to win today.

18.                   ...                   ♚h6–f4

Played after full 25 minutes of thinking.

19.                   g2–g3

Surprise in the press-room. Karpov did take the challenge.

19.                   ...                   ♚f4–h6  
20.                   h2–h4

Karpov played this instantly. Finally the game gets going. This must be the first time in his life that Karpov has moved all of his pawns ahead.

20.                   ...                   ♞a6–c7

GM Watson says: “I don’t know what is going on”. This seems to be the kind evaluation that most of the experts make right now. Maybe the problem is that most of the people at the analyzing tables are “pro-Kasparov”, which make them reluctant to accept that he is in danger of being overrun by Karpov’s army of pawns. Time after 20th: AK: 1:19 GK: 1:20. GM Sosenko thinks that there are too many pieces on the board. “After 20 moves, there should have been some exchanges.” says Sosenko. And GM Watson has made up his mind now: “Black is O.K. because where is White to put his King?”

21.                   g3–g4                   f5×g4  
22.                   f3×g4                   ♚h6–f4  
23.                   ♞f1–e3                   ♞c7–e8

Kasparov is building up pressure on the kingside, and if not careful, then Karpov might face great difficulties with his exposed king-position.

24.                   ♞c3–d1

“All the British players here like Black position - right?” asked Rochal, and continued: “But I’m not British so I prefer White”. Experts indeed are divided on their evaluation at this moment. And nearly no concrete lines are being discussed. The position simply isn’t a tactical one, yet.

GM Speelman seems to think that Karpov is doomed to just hold the position. And that Kasparov will be fine if he can make something happen anywhere. Moves like 24. ... , ♔c8 or 24. ... , ♞f6 are discussed here, but nobody can find a way for Black to break through after 25. ♚g1. And Speelman toyed with 24. ... , a5. But that would possibly give Karpov a heaven for his King after b4-b5. And in fact, White might consider calmly to walk with his King to a2 in many positions.

24. ... h7-h6

At the Russian table in the press-room GM Geller thinks 25.h5 is the best move for Karpov now. Time before 25th: AK: 1:50 GK: 1:48.

25. h4-h5 g6-g5

One more major issue is settled. Karpov can get his knight to f5 anytime, but after an exchange Black ought to be able to push e4 or g4, and thereby finding an exit for his pieces. Nobody leaves the board anymore.

26. ♖h1-g1 ♞e8-f6

Now Speelman thinks this is just very good for White.

27. ♖g1-g2 ♞d8-c8

28. ♔e1-f1 ♞f7-d8

Kasparov has played his last five moves in about 4 minutes.

29. ♔f1-g1 ♞d8-b7

Some in the press-room believe that it will be a draw. But draws counts less than nothing to Karpov, and he has a free shot at a win in this position though it may well prove impossible. But now the time ticks in GK's favour.

Time before 30th: AK: 2:14 GK: 1:53.

30. ♔g1-h1 c5×b4

31. a3×b4 a7-a5

32. ♞e3-f5 ♞d7×f5

33. e4×f5

And suddenly the game is getting wide open! Kasparov might play 33. ... ♞×d5 now, but it will bring life to Karpov's ♞e2.

33. ... a5×b4

34. ♖b1×b4 ♞b7-c5

35. ♖b4×b6 ♞c5-e4

36. ♖b6-c6 ♞c8-b7

37. ♞f2-e1

Karpov's mild time-trouble adds to the sudden excitement in the game.

Time before 37:AK: 2:24 GK: 2:10.

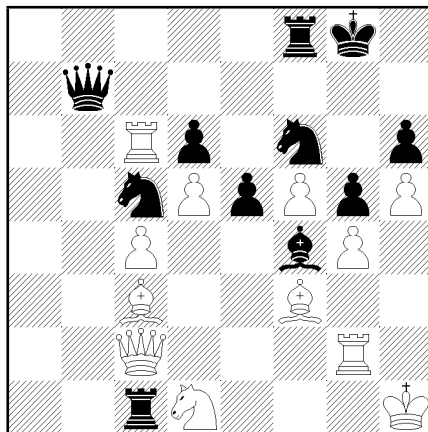
37. ... ♖a8-a1

38. ♞e2-f3 ♞e4-c5

39. ♞e1-c3

"Who is winning?" is the standard question at the press-room. Looks like Karpov is about to eat d6. And Kasparov can hardly afford to exchange pieces here, but then the position of Karpov's pieces seem a little backward.

39. ... ♖a1-c1



Draw

Everybody is shouting at the press-room. A strange end to a strange game. GM Speelman thinks that Karpov must have been scared of losing after, say, an exchange of Queens plus e5-e4 and ♞f6-d7-e5. Black keeps getting beautiful positions. Maybe Karpov was very right to take Kasparov draw-offer without even giving it a second thought.

## 20 Game 20: Lion, Dec 15, 1990

KASPAROV KARPOV

RUY LOPEZ

1. e2-e4 e7-e5

2. ♞g1-f3 ♞b8-c6

3. ♞f1-b5 a7-a6

4. ♞b5-a4 ♞g8-f6

5. 0-0 ♞f8-e7

6. ♖f1-e1 b7-b5

7. ♞a4-b3 d7-d6

8. c2-c3 0-0

9. h2-h3 ♞c8-b7

10. d2-d4 ♖f8-e8

11. ♞b1-d2 ♞e7-f8

12. a2-a4 h7-h6

13. ♞b3-c2 e5×d4

14. c3×d4 ♞c6-b4

15. ♞c2-b1 c7-c5

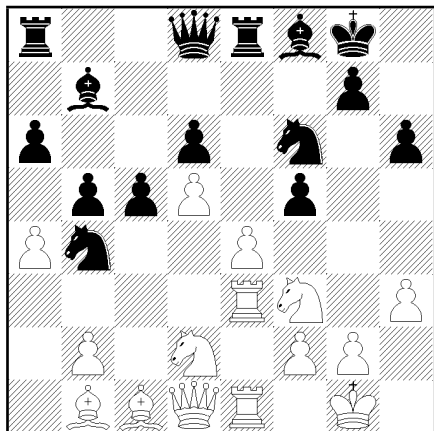
16. d4-d5 ♞f6-d7

17. ♖a1-a3 f7-f5

The two players are tracking the 4th game from New York. Without thinking Kasparov now decided to follow in Timman's path.

18. ♖a3-e3 ♞d7-f6

Karpov took 4 minutes on this move. Maybe he had hoped for 18.e×f5 as Kasparov played in New York?



19. ♖f3-h2

The name of this line is “The Zaitsev-variation of the Ruy Lopez”, but it ought to bear Karpov’s name since he has made it popular. In his game against Timman in February Karpov chose 18. ... , f4, but 18. ... , ♖f6 is known (was already known) from a footnote to the de-Firmian - Ivanov, Chicago 1988, where Black too chose 18. ... , f4. So Karpov took 4 minutes on the untested 18. ... , ♖f6, only to be met by Kasparov’s immediate replay 19. ♗h2, the real novelty in this game.

19. ... ♔g8-h8

One idea is: 20.e×f5 ♜×e3 21.f×e3! ♝×d5 22.e4 ♞f7 23.♗df3 with a direct attack on Black weakened King-side. Time at 20th: GK: 0:34. AK: 0:37

20. b2-b3

Karpov is under pressure. Look at Kasparov’s powerful bishops (put Bc1 on b2), his Rook on the 3rd rank, Nh2 which might jump to g4 and naturally Qd1.

20. ... b5×a4

21. b3×a4 c5-c4

Karpov has to neutralize Kasparov’s bishop on b1 with Nd3. GM Lein thinks that this must be better for White. Everybody seems to agree, but Karpov’s last move 21. ... , c4 do look like a good try to kill White’s attack on the king-side before it even get started.

22. ♝c1-b2

Watson thinks that Kasparov has a strong attack. Rochal thinks that Black’s position “smells”.

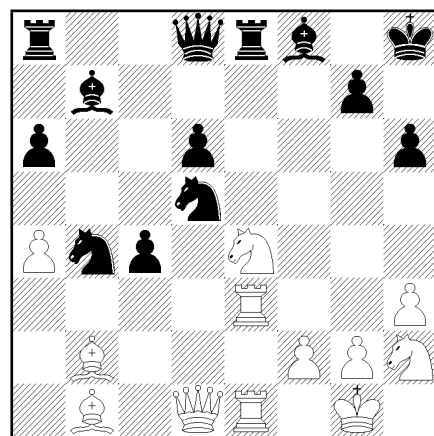
22. ... f5×e4

Karpov decided on this after 34 min. IM Davies thinks that Karpov was a bit paranoid about ♝b1 when he played c5-c4. And he also thinks that we’re seeing the end of the match today. If Kasparov does win this game, then Karpov’s situation would be nearly impossible indeed. GM Lein just said that he doesn’t believe in this for Black.

23. ♞d2×e4

Polugajevski just agreed to that “Karpov destroyed his position” by not playing 22. ... , ♜c8; 23. ♝c3, a5.

23. ... ♞f6×d5



Deep Thoughts suggested here 24. ♜h5! as winning. One line: 24. ♜h5, c3; 25. ♜×c3!, ♞×c3; 26. ♝×c3 and both ♞b4 and h6 are hit.

24. ♜e3-g3 ♜e8-e6

A good defensive move, planning for Qe7 and Re8 with strong counterplay, but will it be enough? “The move is fantastic! Maybe he can hold the position now.” says Spassky. But he also kept touching his nose to indicate that Black’s position still smells bad.

25. ♞h2-g4 ♜d8-e8

Time after B 25th: GK: 1:38 AK: 2:11.

26. ♞g4×h6 c4-c3

27. ♞h6-f5

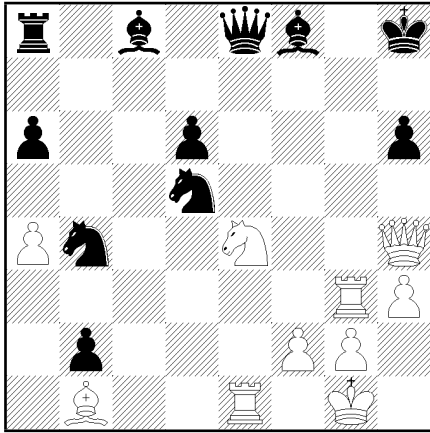
Time: GK: 1:41 AK: 2:22. Karpov only has 8 minutes to make his last 13 moves before the time-control.

27. ... c3×b2

28. ♜d1-g4 ♝b7-c8

At the European analysing board everybody moves the pieces around frantically in search of mating lines. And at the All-Soviet analysing-table nobody moves the pieces but everybody talks and waves with their hands. It seems that they trust White possibilities.

29. ♔g4-h4+ ♖e6-h6  
 30. ♘f5×h6 ♗g7×h6



31. ♔g1-h2  
 Found and made to bring Karpov in even worse time-trouble.

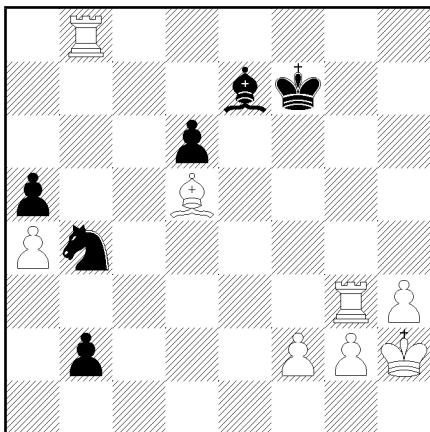
31. ... ♖e8-e5  
 32. ♘e4-g5 ♗e5-f6  
 33. ♖e1-e8 ♘c8-f5

Karpov replied instantly. Not wasting expensive seconds, but probably overlooking what follows.

34. ♗h4×h6+ ♗f6×h6  
 35. ♘g5-f7+ ♔h8-h7  
 36. ♘b1×f5+ ♗h6-g6  
 37. ♘f5×g6+ ♔h7-g7  
 38. ♖e8×a8

What fireworks! The last moves were blitzed out in only fraction of a minute. Here Kasparov stopped to think for a moment.

38. ... ♘f8-e7  
 39. ♖a8-b8 a6-a5  
 40. ♘g6-e4+ ♔g7×f7  
 41. ♘e4×d5+



Karpov resigned.

It looked like a very very hard decision, Karpov thought for several minutes before he finally gave in. Some call this the end of the match. In any case, it surely was the most colorful fireworks of the match.

## 21 Game 21: Lion, Dec 19, 1990

KARPOV KASPAROV

KING'S INDIAN

1. d2-d4 ♘g8-f6  
 2. c2-c4 g7-g6  
 3. ♘b1-c3 ♘f8-g7  
 4. e2-e4 d7-d6  
 5. f2-f3

The Samisch-variation chosen by Karpov with f2-f3 is one of the best King's Indian nut-crackers. And it completes a nice full circle. Last time Karpov played the Samisch-line was in game one in New York.

5. ... 0-0  
 6. ♘c1-e3 e7-e5  
 7. d4-d5 ♘f6-h5  
 8. ♗d1-d2 f7-f5  
 9. 0-0-0 a7-a6

Karpov is thinking. The position is standard, so Karpov is probably checking his preparations. In the 1st game Kasparov tried a minor anomaly with 6. ... c6. Today Kasparov probably prefers to leave it all up to Karpov and make him create the game, for the simple reason that a draw now counts 0.9 points for GK and 0.1 points for Karpov.

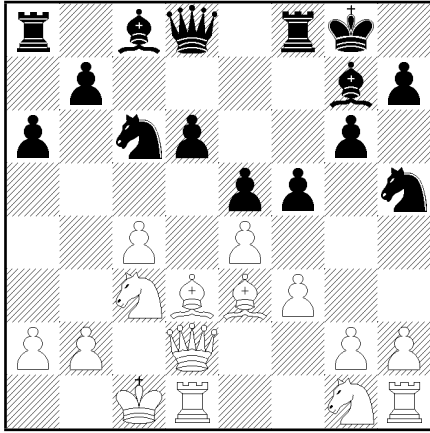
10. ♘f1-d3

After 12 minutes Karpov played what appears to be a new move. 10. ♔b1 has always been played here (according to the NIC and Chess-Base files).

10. ... c7-c5

Time after Blacks 10th: AK: 0:27. GK: 0:09  
 GM Speelman found just a few games with this type of position in the databases. Kasparov's 10. ...c5 seems to be a provocation.

11. d5×c6 ♘b8×c6



The position is already very unstable. Karpov may win the pawn on d6 in many different ways, but his king might easily get into serious trouble in the meantime.

12.            ♘c3-d5

IM Ligterink says: “Looks like a very good position for White.” Black should not allow ♖b6 but 12. ... ♘d4 runs into a new problem after 13. ♘e2.

12.            ...            ♖c8-e6

Kasparov took 14 minutes on this. Time after Blacks 12th: AK: 0:35 GK: 0:24

13.            ♖e3-b6            ♔d8-d7

14.            ♗g1-e2

Karpov’s advantage is beyond discussion.

14.            ...            ♖a8-c8

15.            ♔c1-b1            ♖d7-f7

16.            ♖h1-e1

Alburt thinks that this dynamic position could be slightly better for White, due to his plusses on d5 and b6. One interesting idea pointed out by Alburt was that Black might counterattack by using ♘f4 as a platform.

16.            ...            ♔g8-h8

The general opinion at the pressroom seems to be that Kasparov’s position is “playable” if not equal.

17.            ♖d3-c2

Karpov thought for 22 minutes to find this. The quality of the move is that it keeps “control”. Always a key-word to the understanding of Karpov’s play.

17.            ...            ♘h5-f6

Lev Alburt says “It’s pretty equal”.

18.            ♖c2-d3

What kind of move is this? Well, it is a “Karpovian move!” Like no other grandmaster Kar-

pov makes moves which are not understood until the day after.

18.            ...            ♘f6-d7

19.            ♖b6-g1            ♘d7-c5

IM Tisdall feels that Black is better now.

20.            ♘d5-b6

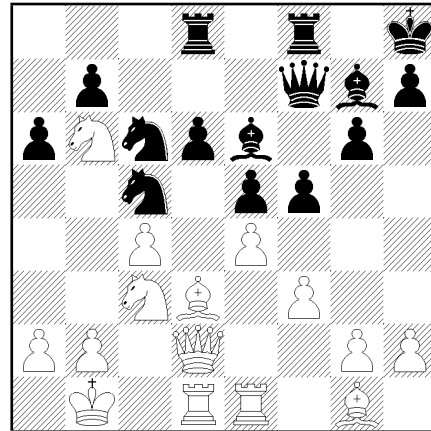
In the press-room very few people analyze the game. “The match is finished so why bother?” Hampered as he is by blockade of b6 and the lack of counter-play in general, Kasparov has to find something not to drift into a far too passive position.

20.            ...            ♖c8-d8

Time after Black 20th: AK: 1:28 GK: 1:25

21.            ♘e2-c3

Lev Alburt says: “It still equal. Now Kasparov has to play ♘b4 to prepare an exchange on d5. I don’t believe that Kasparov should allow White’s knights to go to b6 and d5.” Time after W 21th: AK: 1:33 GK: 1:32.



21.            ...            ♘c6-d4

“The less conventional approach” according to Lev Alburt.

22.            ♘c3-d5

Karpov replied nearly instantly. Having his knights on their optimal squares just can’t be bad. But then again - they look nice but also a bit harmless.

22.            ...            ♖e6×d5

Time after Black 22nd: AK: 1:37 GK: 1:38

23.            ♘b6×d5            f5×e4

Also played instantly. Whatever advantage Karpov might have had - it’s difficult to put an eye on now. Kasparov is equally well represented in the center after getting his ♘h5 to c5.

24.            f3×e4            b7-b5

25.            ♖e1-f1            ♖f7-d7



A very unbalanced situation has arisen. If Kasparov can hold on to his attacking chances, then he might even win the game. If not - then he might end up with an endgame with a very weak pawn on b5 and lose.

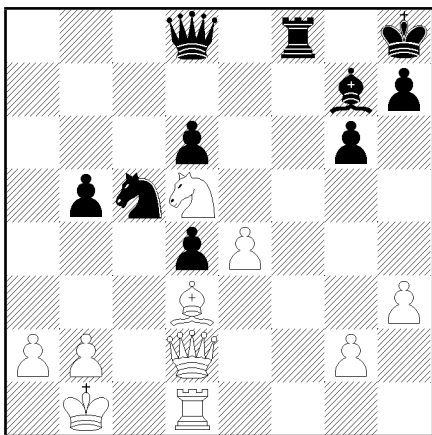
26. c4×b5 a6×b5  
27. ♖f1×f8+ ♜d8×f8

Now GM Alburt thinks that “White is slightly better. Black should have delayed the exchange of the f-pawns. Anyway, Kasparov should be able to hold on.”

28. h2-h3 ♛d7-d8

Time after Black 28th: AK: 2:11. GK: 1:52 Everybody at the pressroom agrees that Karpov’s position is favorable, but now he’s seriously getting short on time.

29. ♙g1×d4 e5×d4



30. ♛d2-e2

Karpov might win the pawn on b5, but it would also open up for Kasparov’s counter-play on the black squares. The game seems to become increasingly unbalanced as the pieces are being exchanged.

Time: AK: 2:12 GK: 2:07. GM Alburt says that “we can very well have a decision today”. Karpov last move really most have caused Kasparov problems.

30. ... ♛d8-h4  
31. ♜d1-f1

Karpov answered instantly. Isn’t the pawn hanging on e4 after 31. ..., ♜×f1 32. ♛×f1 ♞×e4 ? Hardly, since 33. ♛e2 opens up for a strong White attack.

31. ... ♜f8-e8

Kasparov simply is threatening to reduce the game to a draw with a line like: ♞×d3 followed by ♛×e4.

32. ♜f1-f4 ♛h4-g5

Time after Black 32nd: AK: 2:17 GK: 2:16 Rumours in the press-room are that Black might be better here.

33. a2-a3

Time after White’s 33rd: AK: 2:21 GK: 2:21

33. ... h7-h5

It is difficult to see the idea behind Kasparov’s h7-h5. It surely weakens his white squares.

34. ♙b1-a2

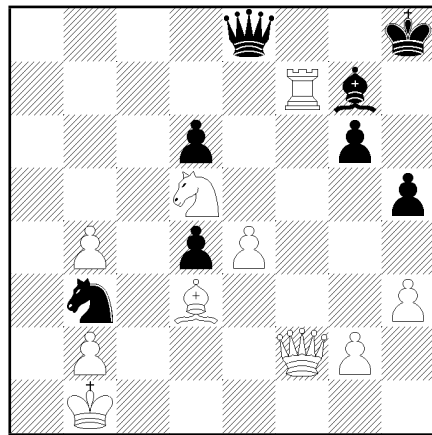
A far more sensible way to kill future back rank problems. But Karpov took full 5 minutes on this. Time: AK: 2:26 GK: 2:23.

34. ... b5-b4

35. a3×b4 ♙a1-a8+

“I think Black is slightly better” says Lev Alburt.

36. ♙a2-b1 ♞c5-b3  
37. ♙b1-c2 ♞b3-a1+  
38. ♙c2-b1 ♞a1-b3  
39. ♛e2-f2 ♛g5-d8  
40. ♜f4-f7 ♛d8×e8



Karpov is going to seal his next move. “Unclear” says Alburt about the position. The experts at the pressroom are in doubt about the position, where a whole World Championship is at stake.

One good line for White goes: 41. ♞e7, ♜a1+; 42. ♙c2, ♛a4; 43. ♞×g6+, ♙h7; 44. ♜×g7+ ♙×g7 45. ♛f8+ ♙×g6 46.e5+.. More complex is 41. ♞e7, ♜a1+; 42. ♙c2, ♞c5; 43. ♞×g6+, ♙g8; 44. ♞e7+, ♙h8 possibly with a draw! Notice that 44. ..., ♛×e7 in this line doesn’t work because White wins after 45. ♜×e7, ♜c1+; 46. ♙×c1, 46. ♞×d3+ and White b-pawn is decisive.

Another line is 41. ♞e7, ♜a1+; 42. ♙c2, ♞c5; 43. ♞×g6+, ♙h7; 44. ♜×g7+, ♙×g7; 45. ♛×d4+, ♙×g6; 46. b×c5, d×c5 where

White seems unable to grab the c5- pawn without allowing Black strong counter-play.

GM Dlugy found the far more pragmatic 41. ♖e7, ♜a1+; 42. ♔c2, ♘c1! where White very well might have to settle for a immediate draw with 43. ♕d2, ♘b3+; 44. ♔c2, ♘c1 etc.

41. b4-b5

Surprise! The whole world has been analysing 41. ♘e7 (and 41. ♘b6). "It's probably a draw now" says Alburt.

41.	...	♔a8-a1+
42.	♔b1-c2	♘b3-c5
43.	♜f7×g7	♞h8×g7
44.	♞f2×d4+	♞e8-e5
45.	♞d4×e5+	d6×e5
46.	b5-b6	♔a1-g1
47.	♘d5-e3	♞g1-e1

Those eight moves were blitzed out on no time at all. Both Karpov and Kasparov obviously had done their homework well in this endgame. White might very well win Kasparov's knight for his strong b6-pawn in many lines, but the cost will be his kingside pawn. And in a later race between b2 pawn and h5-pawn Black might come first.

48.	♘e3-c4	♔e1-g1
49.	♘c4-e3	♔g1-e1

The second repetition of this position. GM Lev Alburt believes that Black will be able to hang on to a draw.

50. ♘e3-c4

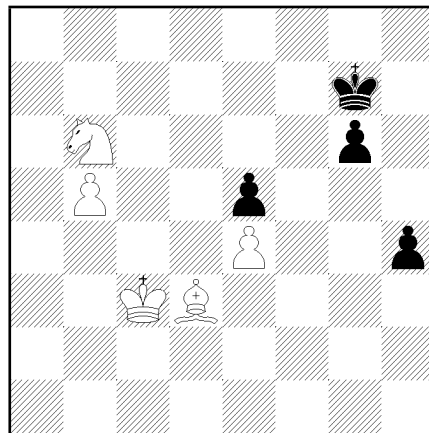
Karpov played this after a good ten minutes thought. Kasparov came back and seems to hesitate to repeat ♜e1-g1.

50. ... ♔e1-g1

After 28 minutes of "deep thoughts" Kasparov did repeat his move. Now it's Karpov who hesitates. He can take a draw immediately with 51. ♘e3 but that's hardly the big idea.

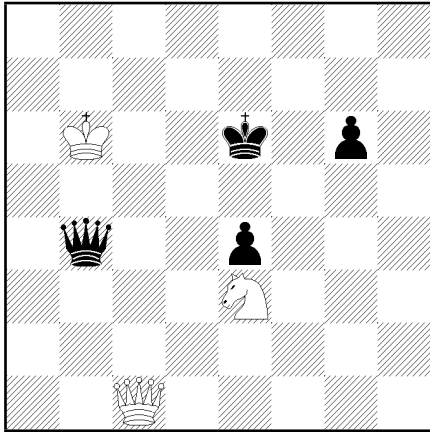
Time: 2:23. GK: 2:59. Rumours are that at the All-Soviet analysing-table in the pressroom Karpov wins. A possible line goes: 51. b4, ♘b7; 52. ♘×e5, ♜×g2+; 53. ♔c3.

51.	b2-b4	♔g1×g2+
52.	♔c2-c3	♘c5-a4+
53.	♔c3-b3	♘a4×b6
54.	♘c4×b6	♔g2-g3
55.	♔b3-c3	♔g3×h3
56.	b4-b5	h5-h4



And again, all the critical moves were blitzed out. Alburt says "Now it is a draw. Not 100 percent, but 95!" The line which he thinks of most be: 57. ♘d7, ♜f3; 58. ♘×e5, ♜f4; 59. b6, h3; 60. b7, h2; 61. b8=♞, h1=♞.

57.	♘b6-c4	♔h3×d3+
58.	♔c3-d3	h4-h3
59.	b5-b6	h3-h2
60.	b6-b7	h2-h1 ♞RR=QXY
61.	b7-b8 ♞RR=QXY	♞h1-f1+
62.	♔d3-c3	♞f1-c1+
63.	♔c3-b3	♞c1-d1+
64.	♔b3-a2	♞d1-a4+
65.	♘c4-a3	♞a4×e4
66.	♞b8-c7+	♔g7-h6
67.	♘a3-c4	♞e4-d5
68.	♔a2-b2	e5-e4
69.	♞c7-f4+	♔h6-g7
70.	♔b2-c3	♞d5-d3+
71.	♔c3-b4	♞d3-d4
72.	♞f4-h4	♔g7-f7
73.	♔b4-b5	♞d4-d5+
74.	♔b5-b4	♞d5-d4
75.	♞h4-h7+	♞d4-g7
76.	♞h7-h1	♞g7-d4
77.	♞h1-h4	♔f7-g8
78.	♞h4-f4	♔g8-g7
79.	♞f4-c1	♔g7-f6
80.	♔b4-b5	♞d4-d5+
81.	♔b5-b6	♞d5-d4+
82.	♔b6-c6	♔f6-e6
83.	♘c4-e3	♞d4-a4+
84.	♔c6-b6	♞a4-b4+



Draw

## 22 Game 22: Lion, Dec 26, 1990

KASPAROV-KARPOV  
RUY LOPEZ

- |     |        |        |
|-----|--------|--------|
| 1.  | e2-e4  | e7-e5  |
| 2.  | ♘g1-f3 | ♘b8-c6 |
| 3.  | ♙f1-b5 | a7-a6  |
| 4.  | ♙b5-a4 | ♘g8-f6 |
| 5.  | 0-0    | ♙f8-e7 |
| 6.  | ♖f1-e1 | b7-b5  |
| 7.  | ♙a4-b3 | d7-d6  |
| 8.  | c2-c3  | 0-0    |
| 9.  | h2-h3  | ♙c8-b7 |
| 10. | d2-d4  | ♖f8-e8 |

“Karpov is offering him the World Championship” said Tisdall. And Kasparov did seem to give a thought to 11. ♘g5 to ask Karpov if he would be interested in 11. ... ♖f8; 12. ♘f3 (♖e8) and draw.

- |     |        |        |
|-----|--------|--------|
| 11. | ♘b1-d2 | ♙e7-f8 |
| 12. | a2-a4  | h7-h6  |
| 13. | ♙b3-c2 | e5xd4  |
| 14. | c3xd4  | ♘c6-b4 |
| 15. | ♙c2-b1 | c7-c5  |
| 16. | d4-d5  | ♘f6-d7 |
| 17. | ♖a1-a3 | f7-f5  |

Karpov follows his own footsteps from the 20th game.

- |     |       |
|-----|-------|
| 18. | e4xf5 |
|-----|-------|

The move which brought Kasparov into a lot of trouble in the 4th game at the New York leg of the match.

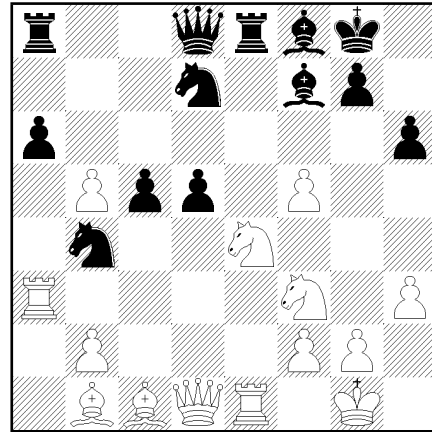
- |     |     |        |
|-----|-----|--------|
| 18. | ... | ♙b7xd5 |
|-----|-----|--------|

GM Alburth thinks that this is a good choice by Karpov, from a psychological point of view.

- |     |        |        |
|-----|--------|--------|
| 19. | ♘d2-e4 | ♙d5-f7 |
|-----|--------|--------|

One point in Karpov’s favour here is that 20. ♘xd6 doesn’t work to 20. ... ♖xe1+; 21. ♘xe1, ♘e5.

- |     |       |       |
|-----|-------|-------|
| 20. | a4xb5 | d6-d5 |
|-----|-------|-------|



- |     |        |
|-----|--------|
| 21. | ♘e4-c3 |
|-----|--------|

Karpov surely has build an impressive center, but it might rest on “feet of clay”.

- |     |     |         |
|-----|-----|---------|
| 21. | ... | ♖e8xe1+ |
|-----|-----|---------|

Kasparov looks as if he’s building up concentration, while Karpov often stares out into the playing-hall. Alburth thinks that: “This is basically what Karpov needs. A complex game where GK has committed himself to a kingside attack.”

- |     |        |
|-----|--------|
| 22. | ♘f3xe1 |
|-----|--------|

Alburth suggested: 22. ... d4; 23. ♙e4!?. On 22. ♖xe1 Kasparov had to find a good answer to 22. ... d4; 23. ♘e4, axb5. Chopping off too many pieces would leave Karpov with an endgame which he could win on his automated-pilot due to his strong central pawns.

Time after W 22nd: GK: 0:42 AK: 0:29.

Alburth liked the move chosen by GK and said that he was planning to play: 22. ... d4; 23. ♘a2!, ♘xa2; 24. ♙xa2, ♙xa2; 25. ♖xa2, axb5; 26. ♖xa8, ♖xa8; 27. ♖b3+, ♔h8; 28. ♖xb5 with an edge for White.

Dlugy said that Kasparov was heading for 22. ... d4; 23. ♙e4!?, ♖b8; 24. bxa6, dxc3; 25. a7 and White looks right. And on 23. ... dxc3; 24. ♙xa8 and ♘d7 is hanging after 24. ♖xa8.

Another suggestion was 22. ... a5.

The common opinion (Alburth, Dlugy and others) is that White has an edge. And the idea

behind Kasparov's last move 22. ♖×e1 is obvious now. After 22. ... , d4; 23. ♕e4!, d×c3; 24. ♕×a8 his ♖d1 will be hitting ♖d7. And as for 22. ... , a×b5; 23. ♖×b5, that will just leave White a pawn up as Dlugy remarked pragmatically. Albut now is convinced that Kasparov has got out of the opening with a significant advantage. But "It's not without counter-chances for Black. It's not a position where only GK can play for a win" says Albut.

22. ... d5-d4

Karpov has spent 40 minutes on this move.

23. ♖c3-a2

On 23. ♕e7 Black might have been o.k. after either 23. ... , ♖c8 or 23. ... , ♖a7. Now 23. ... , ♖×a2; 24. ♕×a2, ♕×a2; 25. ♖×a2, a×b5; 26. ♖×a8, ♖×a8; 27. ♖b3+ and ♖×b5 looks fine for Kasparov.

23. ... ♖b4×a2

24. ♕b1×a2 c5-c4

The product of Karpov's 44 minute "think" on his 22nd move.

25. ♖a3×a6 ♖d7-c5

A line like 26. ♖×a8, ♖×a8; 27. ♕b1, d3 hardly can be Kasparov's idea of big fun.

26. ♖a6×a8 ♖d8×a8

27. ♕a2-b1 d4-d3

Albut says: "It is unclear if Kasparov will be able to save the game." And at the analysing table Kasparov's top-second, Mikhail Gurevich (9th in the World) looks for lines where White might draw after sacrificing a piece on Karpov's strong pawns.

28. ♕c1-e3

Albut says: "Kasparov is in trouble, but he has many ways to try to save position."

28. ... ♖a8-a5

Kasparov's problems are plenty. First of all he'll have problems hanging on to his b-pawns. Spassky is saying that White may draw with 29. ♖×d3!

29. b2-b3

Time after W 29th: GK: 1:23 AK: 1:26.

29. ... ♖c5×b3

30. ♖e1×d3 c4×d3

31. ♕b1×d3

Albut says: "Karpov is better, but Kasparov has very good chances to draw."

31. ... ♖b3-c5

32. ♕d3-f1

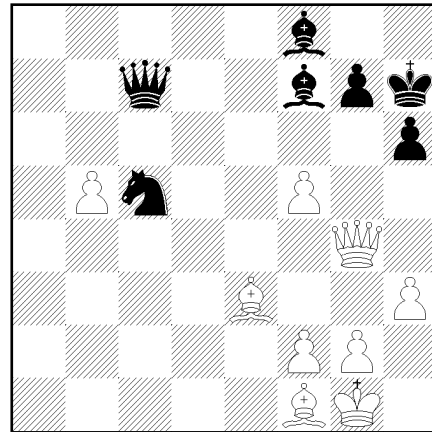
Kasparov's last move indicates that he's going to "sit" from now on - and watch how Karpov is going to break through.

32. ... ♖a5-c7

Time after B 32nd: GK 1:29 AK: 1:51.

The general opinion in Lyon is that White should be able to draw this, but not without difficulties. Albut thinks that Kasparov has improved his chances of drawing the game.

33. ♖d1-g4 ♖g8-h7



Karpov clearly is trying to keep up as much tension as possible. Which is why he tries to avoid an exchange of bishops on c4. Albut says: "Karpov could have tried to get more from the position than he has got. It looks even more drawish than it did a few moves ago."

34. ♕f1-c4

The point is that Karpov cannot win an endgame where he only has ♕f8 against White army of pawns for the simple reason that the black-squared bishop and the h6-pawn cannot win. An exchange on c4 evidently will lead to further exchanges and draw. All experts in Lyon agree now: Draw.

34. ... ♕f7×c4

35. ♖g4×c4

And Karpov chances for a win are diminishing dramatically. Kasparov looks relaxed now.

35. ... ♖c7-e5

Not the most exciting position in a game which might decide a whole World Championship.

36. ♖c4-f7 ♕f8-d6

37. g2-g3

Time after W 37th: GK: 1:50 AK: 2:23.

37. ... ♖e5-e7

So - can Black win after ♖×♖ and ♕×♖? Karpov seems to think so, at least. A World Championship might be balancing on the correct evaluation of the endgame after 38. ♖×e7, ♕×e7; 39. ♕×c5, ♕×c5. "Immediately draw"

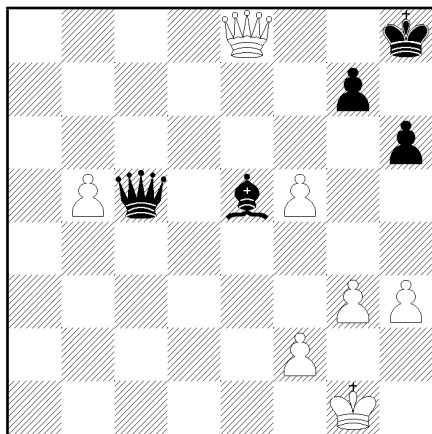
says Roshal, that usually is one of Karpov's supporters.

Another line is: 38. ♖g6+, ♔h8; 39. f6, ♗×f6; 40. ♖×f6, g×f6; 41. ♕×h6 and Black only has one single pawn to put his hopes on.

38. ♖f7-g6+ ♔h7-h8

Alburt says: "I'll not be surprised if Kasparov tries to play a few moves. He might try 39. b6."

39. ♕e3-d4 ♕d6-e5  
 40. ♕d4×c5 ♖e7×c5  
 41. ♖g6-e8+ ♔h8-h7  
 42. ♖e8-g6+ ♔h7-h8  
 43. ♖g6-e8+



Draw.

Kasparov is confirmed World Champion, having reached 12 point out 24 possible.

## 23 Game 23: Lion, Dec 29, 1990

KARPOV-KASPAROV  
KING'S INDIAN DEFENSE

1.	d2-d4	♞g8-f6
2.	c2-c4	g7-g6
3.	♞b1-c3	♞f8-g7
4.	e2-e4	d7-d6
5.	f2-f3	0-0
6.	♞c1-e3	e7-e5
7.	d4-d5	♞f6-h5
8.	♖d1-d2	♖d8-h4+

Deviating from the 21st game.

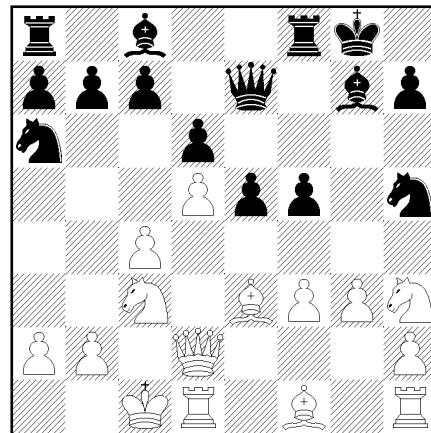
9. g2-g3 ♖h4-e7

In the past Kasparov has played the daring Queen-sac 9. ..., ♞×g3; 10. ♖f2, ♞×f1; 11. ♖×h4, ♞×e3 with some success. Among others he drew Seirawan with the line in a World Cup game a little more than a year ago.

10.	0-0-0	f7-f5
11.	e4×f5	g6×f5
12.	♞g1-h3	

12. ♞h3 is, if not unknown, then a least less common than moves like ♕d3 and ♖b1.

12. ... ♞b8-a6



This version of the King's Indian Samisch variation is quite different from the mutual king-side attack position which arose shortly after the opening in game 21. Here the battle-ground first of all is e4 + e5 + f4 + f5 squares. Karpov might get a vicious attack on Kasparov's king if he can open up the g-file in the right way, but Black might (nearly) get equally well counter-play from the very same squares.

13. ♞h1-g1

Karpov took 17 minutes on this. 13. ♞g1 makes it possible for White to play g3-g4 without any further preparations.

13.	...	♞h5-f6
14.	♞h3-f2	♔g8-h8
15.	♞f1-e2	♞c8-d7
16.	♞e3-g5	

Tension is building up. The point is that after 16. ..., ♞c5; 17. ♞d3, ♞×d3; 18. ♕×d3 Black will not be able to keep control of the key-square e4 after a White g3-g4. And once on the hands of White, the e4-square will be a platform for an attack on the Black king.

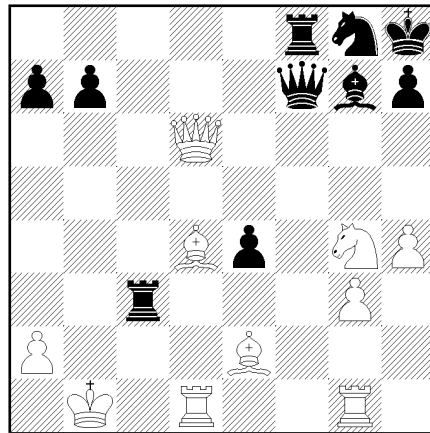
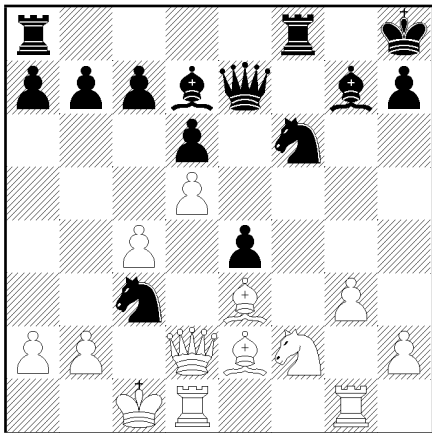
16.	...	♞a6-c5
17.	g2-g4	

Alburt says: "White maybe is slightly better, but Black has different kinds of counter-play.

17.	...	e5-e4
18.	f3×e4	f5×e4

Alburt says: "It's not clear. It very likely that White will win the e4 pawn but maybe Black will get some compensation."

19. ♖g5-e3 ♘c5-a4  
 20. ♗g4-g5 ♗a4×c3



Kasparov resigned.

21. b2×c3

This looks very ambitious. Kasparov doesn't look worried, but very very sceptical. Could this be right? Can Karpov really play such a structure? There are some details which support this idea. Control of d4, ♗f6 has to go to either e8 or g8, and e4 is weakened.

21. ... ♗f6-g8  
 22. ♗f2-g4 c7-c5

This puts Karpov in a dilemma: he can hardly afford to lose access to d4, but 23. d×c5 e.p., b×c6 opens up for a Black attack.

23. d5×c6 ♖d7×c6  
 24. h2-h4

Time after W 24th: AK: 1:40 GK: 1:40.

GM Henley just suggested 24. ... , d5; 25. c5, b6; 26. h5, b×c5; 27. h6, ♖e5; 28. ♗×e5, ♗×e5; 29. ♖×c5 threatening ♖d4.

24. ... d6-d5

That's a man(!) who just needs a draw.

25. c4×d5 ♖c6×d5?  
 26. ♗d2×d5 ♗a8-c8

On 27. ♖d4 Kasparov might consider 27. ... , ♗×c3+ 28. ♖×c3, ♗a3+; 29. ♖b1, ♗×c3.

"Do you understand? Nobody understands!" said French GM Olivier Renet.

27. ♗d5-d6 ♗c8×c3+  
 28. ♖c1-b1 ♗e7-f7  
 29. ♖e3-d4

## 24 Game 24: Lion, Dec 31, 1990

KASPAROV-KARPOV

- RETI  
 1. ♗g1-f3 ♗g8-f6  
 2. c2-c4 e7-e6  
 3. ♗b1-c3

Kasparov's choice of opening came as a surprise to everybody, and probably to Karpov as well.

3. ... ♖f8-b4  
 4. ♗d1-c2 0-0  
 5. a2-a3 ♖b4×c3  
 6. ♗c2×c3

It looks like that Kasparov wants to repeat his tactics from the 24th and last game in the Sevilla match in 1987. Kasparov then needed to win the final game to keep his title, and therefore settled for a slow and very long game. And Kasparov needs to win this game to keep his newly defended title nicely polished.

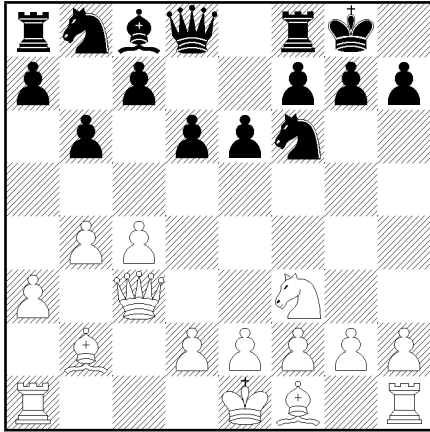
6. ... b7-b6  
 7. b2-b4

Alburt says: "A very normal move."

7. ... d7-d6

In Sweden last year, at the Haningen tournament, Karpov played a similar opening with Black against Van der Wiel.

8. ♖c1-b2



Alburt says: "According to theory this is slightly better for White." Kasparov has chosen an ambitious set-up, considering that he only needs a draw. He gambles with a lot of money. 200.000 dollars is the difference between a lost and a drawn game for Kasparov today. This is maybe the most expensive game in the whole chess-history right now.

8.                   ...                   ♘c8-b7  
 9.                   g2-g3                   c7-c5  
 10.                  ♘f1-g2

Time after W 10th: GK: 0:28 AK: 0:45.

Black has to be careful not to end up in a position where he'll regret that he parted with his bishop.

10.                  ...                   ♞b8-d7  
 11.                  0-0                   ♖a8-c8

A game Drasko - Arnason continued: 12.d3. Black won in 38, but that's just what IGM Arnason was supposed to do. Alburt thinks that it's still a very elastic position. And Kasparov now has to choose which structure to base his game on. One with d2-d4? Or one with the slower d2-d3 and e2-e3.

If Kasparov wants to repeat his strategy from the 24th game in Seville 87, then now 12.d3 is the move to secure a long battle. By the way, many think that an adjournment isn't impossible at all.

12.                  d2-d3

One plan for White here is to play e2-e4, preferably to provoke a Black e6-e5, so to make use of the f5-square with Nh4, as suggested by Alburt.

12.                  ...                   ♞f8-e8

In the before mentioned game Drasko - Arnason Black played 12. ... , d5, so maybe this is unknown territory.

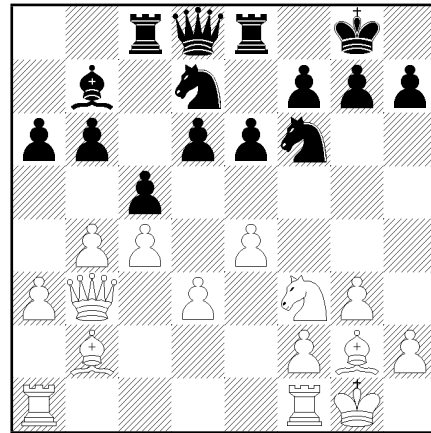
13.                  e2-e4

A major decision which might explain why Kasparov took full 27 minute to do it.

13.                  ...                   a7-a6

A useful waiting move. It prevents a White b4-b5 followed by a3-a4-a5, since now Black can close the Q-side with a6-a5. Kasparov is working hard now. He has to look out for a Black b6-b5, and also, at the moment Karpov seems better developed with his rooks on c8 and e8, so a Black break with d6-d5 might turn out well for Karpov. The few experts who are interested in the game - and not already celebrating New Years eve - seems to think that Kasparov's advantage has diminished, if it ever has existed.

14.                  ♞c3-b3



Designed to pull the teeth out of both b6-b5 and d6-d5.

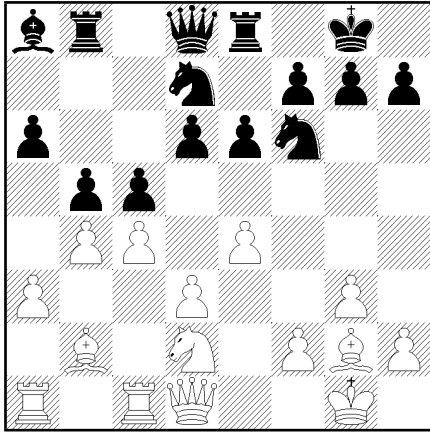
14.                  ...                   b6-b5

Looks like Karpov is giving up the ball now. Kasparov replied immediately.

15.                  ♞f3-d2                   ♞c8-b8

Alburt thinks that: "This is a very complex position to play, especially at such high stakes. I don't think that this was the best line for Kasparov to play if he just wants to make a draw."

16.                  ♞f1-c1                   ♞b7-a8  
 17.                  ♞b3-d1



Not a pawn-sacrifice since after: 17. ..., c×b4; 18. a×b4, b×c4; 19. ♖×c4, ♜×b4; 20. ♙a3 White will win the pawn back on d6, with a fat interest.

17. ... ♙d8-e7

Still regrouping.

18. c4×b5 a6×b5

19. ♘d2-b3 e6-e5

Now Kasparov might consider moving his knight like ♞b3-d2-f1-e3-f5. A nice plan, but it's unlikely that Karpov will sit on his hands for so long. Both Kasparov and Karpov appears to be deeply concentrated. A mutual adjustment of the position might now be 20. ♘d2, ♞f8; 21. ♘f1, ♞e6; 22. ♞e3. But in general Black has to be careful not to open up the center in a way which will bring life to ♙b2.

20. f2-f3

"Looks a bit strange" says Albrt. 20. f3 do strenghten White center, but it looks very "slow".

20. ... h7-h5

An aggressive move? Only a little. White nearly is obliged to answer with 21.h4, after which Black will have to choose between a blitz-attack based on g7-g5 (not Karpov's style) and a positional structure based on g7-g6 and ♞d7-f8-e6.

21. b4×c5 d6×c5

22. a3-a4

So that was Kasparov's plan with f2-f3.

22. ... h5-h4

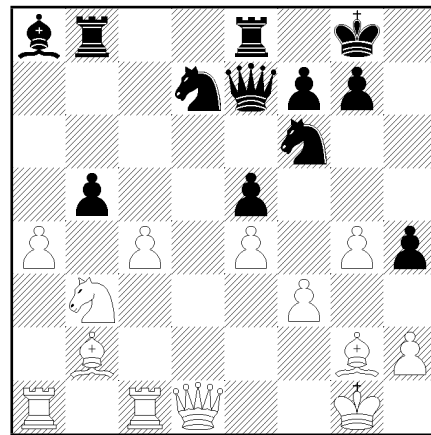
"A complex struggle" according to Albrt. Black has real chances to exploit the black squares around White king, but if Karpov doesn't break through, then he might end up with a positionally bad, maybe even lost, position.

23. g3-g4

This stops Black's immediate access to the black squares on the king-side but as Spassky stated: "23.g4?! That's not serious business". What Spassky considered right was : 23. ♙a3 h×g3 24.h×g3 ♞h5 25. ♚h2 ♜g5 with great complications mounting up. Albrt says: "I don't like White's position - it's obvious that Karpov is better".

23. ... c5-c4?

24. d3×c4



Kasparov virtually jumped back on stage when he saw Karpov play 23. ..., c4.

24. ... b5×a4

25. ♙b2-a3!

Much better than 25. ♜×a4?, ♞c5; 26. ♙a3, ♜×b3! and Black comes out on top.

25. ... ♙e7-d8

26. ♞b3-c5

Albrt says: "Probably Black is still slightly better, and probably White now can hold the position. 23. ..., c4 might have been premature, since it simplifies the position to early."

26. ... ♙a8-c6

No points for 26. ..., ♙b6?; 27. ♜ab1, ♙a7; 28. ♙×a4 and White has solved two problems simultaneously, the a4-pawn and the pin on the knight.

27. ♞c5×a4 ♞f6-h7

Karpov obviously toys with the theme: ♞g5 + h3 + ♙b6 + ♞×e4. Kasparov might have to play h2-h3 sooner or later, which will leave Black with clear compensation for the pawn after a ♞h7-g5-e6-f4. Albrt thinks that Karpov's pawn-sacrifice was a "bluff".

28. ♞a4-c5 ♞h7-g5

And not: 28. ..., ♙b6 29. ♜cb1, ♙a7; 30. ♙b4, ♙b6; 31. ♙a3, ♙a7 and draw!



29. ♖c5×d7 ♙c6×d7

30. ♖c1-c3

Alburt still thinks that the game should be a draw. He predicts that GK will offer a draw in the 38th or 39th move, if he has a slightly better position.

30. ... ♔d8-a5

31. ♖c3-d3 ♙d7-a4

32. ♖d1-e1 ♔a5-a6

All agree that Kasparov is better. Alburt doesn't think that White is winning, but he still believes that a draw will be agreed in a few moves.

33. ♙a3-c1 ♘g5-e6

34. ♖d3-a3 ♘e6-c5

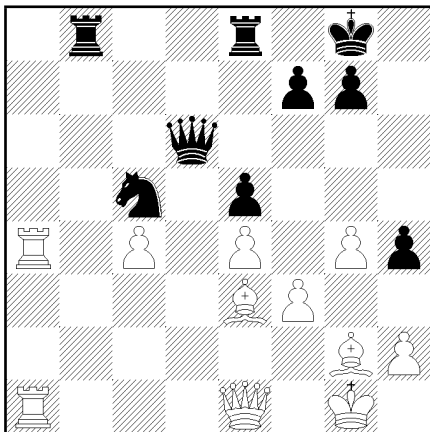
35. ♙c1-e3

White is winning - says Alburt.

35. ... ♔a6-d6

Kasparov has a very pleasant choice between moves like 36. ♖×a4 or 36. ♔×h4 - if his wants to keep it simple.

36. ♖a3×a4



Draw.

No doubt that Kasparov is winning in the final position. The match for the 1990 World Championship title has ended with a win for Garry Kasparov at 21:53 New Year's eve local time in Lyon. The final score of the match is: Kasparov 12.5 points - Karpov 11.5 points.